

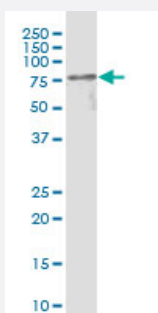
CX Grade

MFN2 monoclonal antibody (M01J), clone 6A8

Catalog # H00009927-M01J

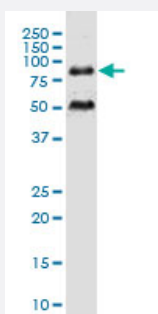
Size 100 ug

Applications



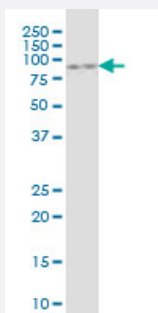
Western Blot (Cell lysate)

MFN2 monoclonal antibody (M01J), clone 6A8. Western Blot analysis of MFN2 expression in HeLa.



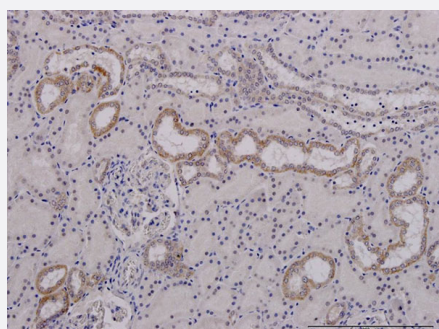
Western Blot (Cell lysate)

MFN2 monoclonal antibody (M01J), clone 6A8. Western Blot analysis of MFN2 expression in PC-12.



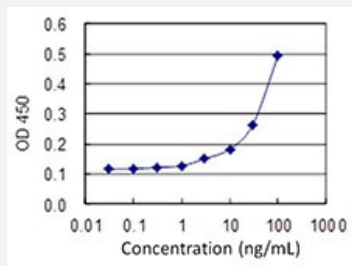
Western Blot (Cell lysate)

MFN2 monoclonal antibody (M01J), clone 6A8. Western Blot analysis of MFN2 expression in NIH/3T3.



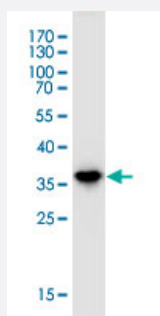
Immunohistochemistry (Formalin/PFA-fixed paraffin-embedded sections)

Immunoperoxidase of monoclonal antibody to MFN2 on formalin-fixed paraffin-embedded human kidney. [antibody concentration 3 ug/ml]



Sandwich ELISA (Recombinant protein)

Detection limit for recombinant GST tagged MFN2 is 1 ng/ml as a capture antibody.



Western Blot detection against Immunogen (36.41 KDa) .

Specification

Product Description	Mouse monoclonal antibody raised against a partial recombinant MFN2. This product is belong to Cell Culture Grade Antibody (CX Grade).
Immunogen	MFN2 (NP_055689, 661 a.a. ~ 757 a.a) partial recombinant protein with GST tag. MW of the GST tag alone is 26 KDa.
Sequence	FKRQFVEHASEKLQLVISYTGSNCSHQVQQELSGTFAHLCQQVDVTRENLEQEIAAMNKKIEVLD SLQSKAKLLRNKAGWLDSELMFTHQYLQPSR
Host	Mouse
Reactivity	Human, Mouse, Rat
Interspecies Antigen Sequence	Mouse (93); Rat (93)
Preparation Method	Cell Culture Production
Isotype	IgG2a Kappa
Quality Control Testing	Antibody Reactive Against Recombinant Protein. Western Blot detection against Immunogen (36.41 KDa) .
Storage Buffer	In 1x PBS, pH 7.4
Storage Instruction	Store at -20°C or lower. Aliquot to avoid repeated freezing and thawing.

Applications

- Western Blot (Cell lysate)

MFN2 monoclonal antibody (M01J), clone 6A8. Western Blot analysis of MFN2 expression in HeLa.

[Protocol Download](#)

- Western Blot (Cell lysate)

MFN2 monoclonal antibody (M01J), clone 6A8. Western Blot analysis of MFN2 expression in PC-12.

[Protocol Download](#)

- Western Blot (Cell lysate)

MFN2 monoclonal antibody (M01J), clone 6A8. Western Blot analysis of MFN2 expression in NIH/3T3.

[Protocol Download](#)

- Western Blot (Recombinant protein)

[Protocol Download](#)

- Immunohistochemistry (Formalin/PFA-fixed paraffin-embedded sections)

Immunoperoxidase of monoclonal antibody to MFN2 on formalin-fixed paraffin-embedded human kidney. [antibody concentration 3 ug/ml]

[Protocol Download](#)

- Sandwich ELISA (Recombinant protein)

Detection limit for recombinant GST tagged MFN2 is 1 ng/ml as a capture antibody.

[Protocol Download](#)

- ELISA

Gene Info — MFN2

Entrez GeneID	9927
---------------	----------------------

GeneBank Accession#	NM_014874
---------------------	---------------------------

Protein Accession#	NP_055689
--------------------	---------------------------

Gene Name	MFN2
Gene Alias	CMT2A, CMT2A2, CPRP1, HSG, KIAA0214, MARF
Gene Description	mitofusin 2
Omim ID	601152 608507 609260
Gene Ontology	Hyperlink
Gene Summary	This gene encodes a mitochondrial membrane protein that participates in mitochondrial fusion and contributes to the maintenance and operation of the mitochondrial network. This protein is involved in the regulation of vascular smooth muscle cell proliferation, and it may play a role in the pathophysiology of obesity. Mutations in this gene cause Charcot-Marie-Tooth disease type 2A2, and hereditary motor and sensory neuropathy VI, which are both disorders of the peripheral nervous system. Defects in this gene have also been associated with early-onset stroke. Two transcript variants encoding the same protein have been identified. [provided by RefSeq]
Other Designations	OTTHUMP00000002509 hyperplasia suppressor mitochondrial assembly regulatory factor mitofusin-2 transmembrane GTPase MFN2

Disease

- [Charcot-Marie-Tooth Disease](#)
- [Genetic Predisposition to Disease](#)
- [Glaucoma](#)
- [Hereditary Sensory and Motor Neuropathy](#)