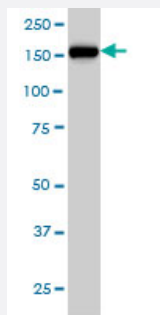


CNAP1 monoclonal antibody (M01), clone 4C12

Catalog # H00009918-M01

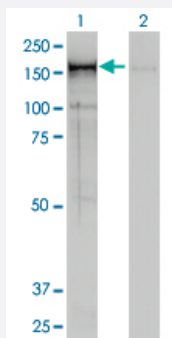
Size 100 ug

Applications



Western Blot (Cell lysate)

CNAP1 monoclonal antibody (M01), clone 4C12 Western Blot analysis of CNAP1 expression in HeLa (Cat # L013V1).

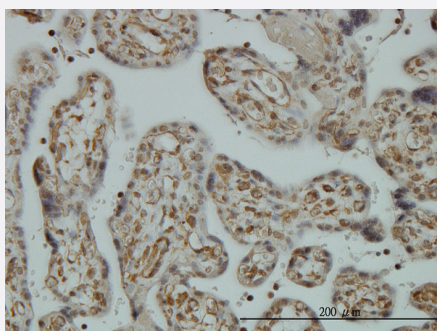


Western Blot (Transfected lysate)

Western Blot analysis of CNAP1 expression in transfected 293T cell line by CNAP1 monoclonal antibody (M01), clone 4C12.

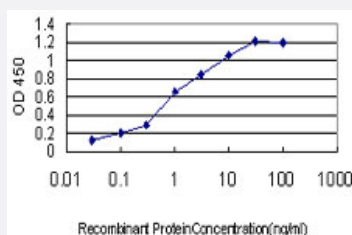
Lane 1: CNAP1 transfected lysate(157 KDa).

Lane 2: Non-transfected lysate.



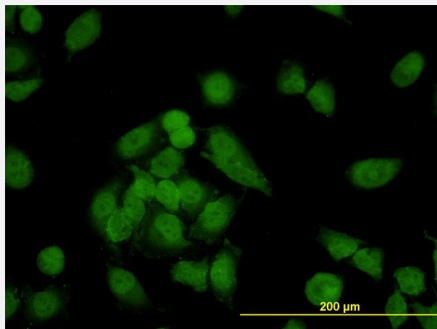
Immunohistochemistry (Formalin/PFA-fixed paraffin-embedded sections)

Immunoperoxidase of monoclonal antibody to CNAP1 on formalin-fixed paraffin-embedded human placenta. [antibody concentration 3 ug/ml]



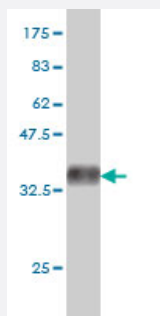
Sandwich ELISA (Recombinant protein)

Detection limit for recombinant GST tagged CNAP1 is approximately 0.1ng/ml as a capture antibody.



Immunofluorescence

Immunofluorescence of monoclonal antibody to CNAP1 on HeLa cell. [antibody concentration 10 ug/ml]



Western Blot detection against Immunogen (36.63 KDa) .

Specification

Product Description	Mouse monoclonal antibody raised against a partial recombinant CNAP1.
Immunogen	CNAP1 (AAH28182, 1240 a.a. ~ 1339 a.a) partial recombinant protein with GST tag. MW of the GS T tag alone is 26 KDa.
Sequence	LRKMLDNFDCFGDKLSDESIFSAFLSVVGKLRRGAKPEGKAIIDFEQKLRACHTRGLDGIKELEIG QAGSQRAPSAKKPSSGSRYPPLASTASDNDFVT
Host	Mouse
Reactivity	Human
Interspecies Antigen Sequence	Mouse (84)
Isotype	IgG1 Kappa
Quality Control Testing	Antibody Reactive Against Recombinant Protein. Western Blot detection against Immunogen (36.63 KDa) .
Storage Buffer	In 1x PBS, pH 7.4
Storage Instruction	Store at -20°C or lower. Aliquot to avoid repeated freezing and thawing.

Applications

- Western Blot (Cell lysate)

CNAP1 monoclonal antibody (M01), clone 4C12 Western Blot analysis of CNAP1 expression in HeLa (Cat # L013V1).

[Protocol Download](#)

- Western Blot (Transfected lysate)

Western Blot analysis of CNAP1 expression in transfected 293T cell line by CNAP1 monoclonal antibody (M01), clone 4C12.

Lane 1: CNAP1 transfected lysate(157 KDa).

Lane 2: Non-transfected lysate.

[Protocol Download](#)

- Western Blot (Recombinant protein)

[Protocol Download](#)

- Immunohistochemistry (Formalin/PFA-fixed paraffin-embedded sections)

Immunoperoxidase of monoclonal antibody to CNAP1 on formalin-fixed paraffin-embedded human placenta. [antibody concentration 3 ug/ml]

[Protocol Download](#)

- Sandwich ELISA (Recombinant protein)

Detection limit for recombinant GST tagged CNAP1 is approximately 0.1ng/ml as a capture antibody.

[Protocol Download](#)

- ELISA

- Immunofluorescence

Immunofluorescence of monoclonal antibody to CNAP1 on HeLa cell. [antibody concentration 10 ug/ml]

Gene Info — NCAPD2

Entrez GeneID [9918](#)

GeneBank Accession# [BC028182](#)

Protein Accession# [AAH28182](#)

Gene Name	NCAPD2
Gene Alias	CAP-D2, CNAP1, KIAA0159, hCAP-D2
Gene Description	non-SMC condensin I complex, subunit D2
Gene Ontology	Hyperlink
Gene Summary	O
Other Designations	chromosome condensation related SMC associated protein 1 chromosome condensation-related SMC-associated protein 1

Disease

- [Alzheimer disease](#)
- [Kidney Failure](#)