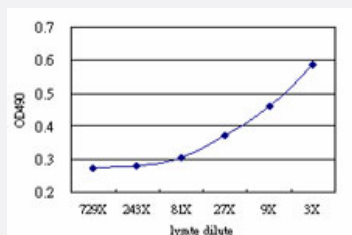


SPATA2 (Human) Matched Antibody Pair

Catalog # H00009825-AP51

Size 1 Set

Applications



Sandwich ELISA detection sensitivity ranging from approximately 27x to 3x dilution of the SPATA2 293T overexpression lysate (non-denatured).

Specification

Product Description	This antibody pair set comes with a matched antibody pair to detect and quantify the protein level of human SPATA2.
Reactivity	Human
Interspecies Antigen Sequence	Mouse (85); Rat (86)
Quality Control Testing	Standard curve using SPATA2 293T overexpression lysate (non-denatured) as an analyte. Sandwich ELISA detection sensitivity ranging from approximately 27x to 3x dilution of the SPATA2 293T overexpression lysate (non-denatured).
Supplied Product	Antibody pair set content: 1. Capture antibody: mouse monoclonal anti-SPATA2 (100 ug) 2. Detection antibody: rabbit purified polyclonal anti-SPATA2 (50 ug) *Reagents are sufficient for at least 3-5 x 96 well plates using recommended protocols.
Storage Instruction	Store reagents of the antibody pair set at -20°C or lower. Please aliquot to avoid repeated freeze thaw cycle. Reagents should be returned to -20°C storage immediately after use.

Applications

- ELISA Pair (Transfected lysate)

[Protocol Download](#)

Gene Info — SPATA2

Entrez GeneID	9825
---------------	----------------------

Gene Name	SPATA2
-----------	--------

Gene Alias	FLJ13167, KIAA0757, PD1, tamo
------------	-------------------------------

Gene Description	spermatogenesis associated 2
------------------	------------------------------

Omim ID	607662
---------	------------------------

Gene Ontology	Hyperlink
---------------	---------------------------

Other Designations	OTTHUMP00000031253 spermatogenesis associated PD1
--------------------	---