

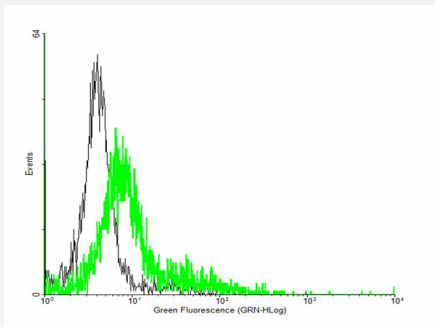
MaxPab®

## GIT2 purified MaxPab mouse polyclonal antibody (B01P)

Catalog # H00009815-B01P

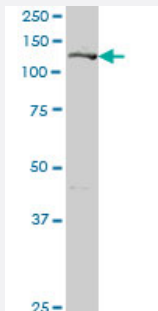
Size 50 ug

### Applications



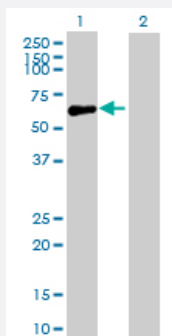
#### Flow Cytometry

FACS analysis of negative control 293 cells (Black) and GIT2 expressing 293 cells (Green) using GIT2 purified MaxPab mouse polyclonal antibody.



#### Western Blot (Tissue lysate)

GIT2 MaxPab polyclonal antibody. Western Blot analysis of GIT2 expression in human pancreas.



#### Western Blot (Transfected lysate)

Western Blot analysis of GIT2 expression in transfected 293T cell line ([H00009815-T01](#)) by GIT2 MaxPab polyclonal antibody.

Lane 1: GIT2 transfected lysate(51.81 KDa).

Lane 2: Non-transfected lysate.

### Specification

#### Product Description

Mouse polyclonal antibody raised against a full-length human GIT2 protein.

Immunogen	GIT2 (NP_631940.1, 1 a.a. ~ 471 a.a) full-length human protein.
Sequence	MSKRLRSSEVCADCSGPDPSWASVNRGTFLCDECCSVHRSLGRHISQVRHLKHTPWPPTLLQM VETLYNNGANSIWEHSLLDPASIMSGRRKANPQDKVHPNKAEFIRAKYQMLAFVHRLPCRDDDSV TAKDLSKQLHSSVRTGNLETCLRLLSLGAQANFFHPEKGNTPLHVASKAGQILQAELLAVYGADP GTQDSSGKTPVDYARQGQGHHELAERLVEIQYELTDRLAFYLCGRKPDHKNGQHFIIPQMADSSLD LSELAKAAKKKLQSLSNHLFEELAMDMYDEVDRRETDVWLATQNHSAVLTETTVPFLPVNPE YSSTRNQGRQKLARFNAHEFATLVIDILSDAKRRQQGSSLSGSKDNVELILKTINNQHVSQDND QPDYDSVASDEDTDLETTASKTNRQKSLDSDLSDGPVTVQEFMEVKNALVASEAKIQQLMKVNN NLSDELRLIMQKLLGKDAN
Host	Mouse
Reactivity	Human
Interspecies Antigen Sequence	Mouse (93); Rat (95)
Quality Control Testing	Antibody reactive against mammalian transfected lysate.
Storage Buffer	In 1x PBS, pH 7.4
Storage Instruction	Store at -20°C or lower. Aliquot to avoid repeated freezing and thawing.

## Applications

- Flow Cytometry

FACS analysis of negative control 293 cells (Black) and GIT2 expressing 293 cells (Green) using GIT2 purified MaxPab mouse polyclonal antibody.

- Western Blot (Tissue lysate)

GIT2 MaxPab polyclonal antibody. Western Blot analysis of GIT2 expression in human pancreas.

[Protocol Download](#)

- Western Blot (Transfected lysate)

Western Blot analysis of GIT2 expression in transfected 293T cell line ([H00009815-T01](#)) by GIT2 MaxPab polyclonal antibody.

Lane 1: GIT2 transfected lysate(51.81 KDa).

Lane 2: Non-transfected lysate.

[Protocol Download](#)

## Gene Info — GIT2

Entrez GeneID	<a href="#">9815</a>
GeneBank Accession#	<a href="#">NM_139201</a>
Protein Accession#	<a href="#">NP_631940.1</a>
Gene Name	GIT2
Gene Alias	CAT-2, DKFZp686G01261, KIAA0148, MGC760
Gene Description	G protein-coupled receptor kinase interacting ArfGAP 2
Omim ID	<a href="#">608564</a>
Gene Ontology	<a href="#">Hyperlink</a>
Gene Summary	<p>This gene encodes a member of the GIT protein family, which interact with G protein-coupled receptor kinases and possess ADP-ribosylation factor (ARF) GTPase-activating protein (GAP) activity. GIT proteins traffic between cytoplasmic complexes, focal adhesions, and the cell periphery, and interact with Pak interacting exchange factor beta (PIX) to form large oligomeric complexes that transiently recruit other proteins. GIT proteins regulate cytoskeletal dynamics and participate in receptor internalization and membrane trafficking. This gene has been shown to repress lamellipodial extension and focal adhesion turnover, and is thought to regulate cell motility. This gene undergoes extensive alternative splicing to generate multiple isoforms, but the full-length nature of some of these variants has not been determined. The various isoforms have functional differences, with respect to ARF GAP activity and to G protein-coupled receptor kinase 2 binding. [provided by RefSeq]</p>
Other Designations	ARF GTPase-activating protein GIT2 G protein-coupled receptor kinase interactor 2 GRK-interacting protein 2 cool-associated, tyrosine phosphorylated protein 2

## Pathway

- [Endocytosis](#)