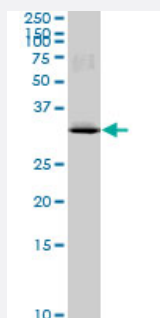


MAD2L1BP monoclonal antibody (M03), clone 4G11

Catalog # H00009587-M03

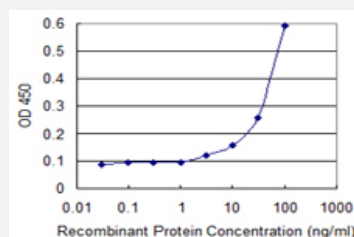
Size 100 ug

Applications



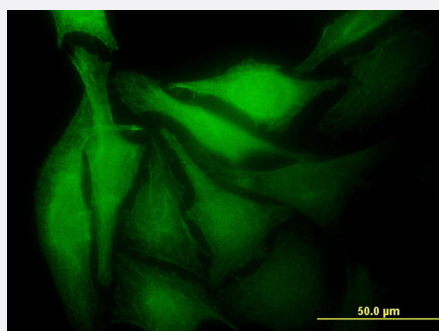
Western Blot (Cell lysate)

MAD2L1BP monoclonal antibody (M03), clone 4G11. Western Blot analysis of MAD2L1BP expression in HeLa S3 NE (Cat # L013V3).



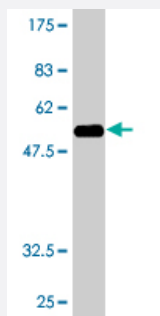
Sandwich ELISA (Recombinant protein)

Detection limit for recombinant GST tagged MAD2L1BP is 1 ng/ml as a capture antibody.



Immunofluorescence

Immunofluorescence of monoclonal antibody to MAD2L1BP on HeLa cell .
[antibody concentration 10 ug/ml]



Western Blot detection against Immunogen (55.88 KDa) .

Specification

Product Description	Mouse monoclonal antibody raised against a full-length recombinant MAD2L1BP.
Immunogen	MAD2L1BP (AAH02904, 1 a.a. ~ 274 a.a) full-length recombinant protein with GST tag. MW of the GST tag alone is 26 KDa.
Sequence	MAAPEAEVLSSAAVPDLEWYEKSEETHASQIELLETSSSTQEPLNASEAFCPRDCMVPVVFPGPV SQEGCCQFTCELLKHIMYQRQQLPYEQLKHFYRKPSPQAEEMLKKKPRATTEVSSRKCCQAL AELESVLSHLEDDFARTLVPRVLILLGGNALSPEFYELDLSELLAPYSVDQSLSTAACLRRLFRAIF MADAFSELQAPPLMGTVVMAQGHRNCGEDWFRPKLNRYVPSRGHKLTVTLSCGRPSIRTTAWE DYWFFQAPVTFKGFRE
Host	Mouse
Reactivity	Human
Interspecies Antigen Sequence	Mouse (76); Rat (79)
Isotype	IgG2a Kappa
Quality Control Testing	Antibody Reactive Against Recombinant Protein. Western Blot detection against Immunogen (55.88 KDa) .
Storage Buffer	In 1x PBS, pH 7.4
Storage Instruction	Store at -20°C or lower. Aliquot to avoid repeated freezing and thawing.

Applications

- Western Blot (Cell lysate)

MAD2L1BP monoclonal antibody (M03), clone 4G11. Western Blot analysis of MAD2L1BP expression in Hela S3 NE (Cat # L013V3).

[Protocol Download](#)

- Western Blot (Recombinant protein)

[Protocol Download](#)

- Sandwich ELISA (Recombinant protein)

Detection limit for recombinant GST tagged MAD2L1BP is 1 ng/ml as a capture antibody.

[Protocol Download](#)

- ELISA

- Immunofluorescence

Immunofluorescence of monoclonal antibody to MAD2L1BP on HeLa cell . [antibody concentration 10 ug/ml]

Gene Info — MAD2L1BP

Entrez GeneID [9587](#)

GeneBank Accession# [BC002904](#)

Protein Accession# [AAH02904](#)

Gene Name MAD2L1BP

Gene Alias CMT2, KIAA0110, MGC11282, RP1-261G23.6

Gene Description MAD2L1 binding protein

Gene Ontology [Hyperlink](#)

Gene Summary The protein encoded by this gene was identified as a binding protein of the MAD2 mitotic arrest d efficient-like 1 (MAD2/MAD2L1). MAD2 is a key component of the spindle checkpoint that delays t he onset of anaphase until all the kinetochores are attached to the spindle. This protein may intera ct with the spindle checkpoint and coordinate cell cycle events in late mitosis. Alternatively spliced transcript variants encoding distinct isoforms have been observed. [provided by RefSeq

Other Designations OTTHUMP00000016496|caught by MAD2 protein