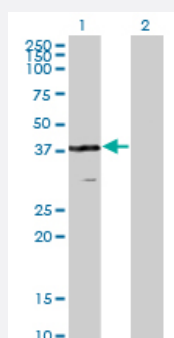


# VPS26A monoclonal antibody (M02), clone 1C4

Catalog # H00009559-M02

Size 100 ug

## Applications

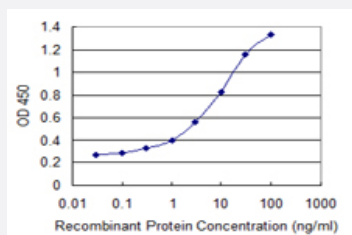


### Western Blot (Transfected lysate)

Western Blot analysis of VPS26A expression in transfected 293T cell line by VPS26A monoclonal antibody (M02), clone 1C4.

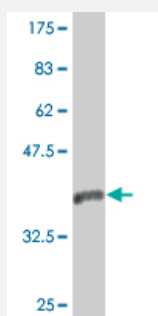
Lane 1: VPS26A transfected lysate (38.2 KDa).

Lane 2: Non-transfected lysate.



### Sandwich ELISA (Recombinant protein)

Detection limit for recombinant GST tagged VPS26A is 0.1 ng/ml as a capture antibody.



Western Blot detection against Immunogen (36.74 KDa).

## Specification

### Product Description

Mouse monoclonal antibody raised against a partial recombinant VPS26A.

Immunogen	VPS26A (NP_004887.2, 228 a.a. ~ 327 a.a) partial recombinant protein with GST tag. MW of the GST tag alone is 26 KDa.
Sequence	ETIAKYEIMDGAPVKGESIPIRLFLAGYDPTPTMRDVNKKFSVRYFLNLVLVDEEDRRYFKQQEILW RKAPEKLRKQRTNFHQRFESPESQASAEQPEM
Host	Mouse
Reactivity	Human
Isotype	IgG2a Kappa
Quality Control Testing	Antibody Reactive Against Recombinant Protein. Western Blot detection against Immunogen (36.74 KDa) .
Storage Buffer	In 1x PBS, pH 7.4
Storage Instruction	Store at -20°C or lower. Aliquot to avoid repeated freezing and thawing.

## Applications

- Western Blot (Transfected lysate)

Western Blot analysis of VPS26A expression in transfected 293T cell line by VPS26A monoclonal antibody (M02), clone 1C4.

Lane 1: VPS26A transfected lysate(38.2 KDa).

Lane 2: Non-transfected lysate.

[Protocol Download](#)

- Western Blot (Recombinant protein)

[Protocol Download](#)

- Sandwich ELISA (Recombinant protein)

Detection limit for recombinant GST tagged VPS26A is 0.1 ng/ml as a capture antibody.

[Protocol Download](#)

- ELISA

## Gene Info — VPS26A

Entrez GeneID [9559](#)

GeneBank Accession# [NM\\_004896](#)

Protein Accession#	<a href="#">NP_004887.2</a>
Gene Name	VPS26A
Gene Alias	FLJ12930, HB58, Hbeta58, PEP8A, VPS26
Gene Description	vacuolar protein sorting 26 homolog A (S. pombe)
Omim ID	<a href="#">605506</a>
Gene Ontology	<a href="#">Hyperlink</a>
Gene Summary	<p>This gene belongs to a group of vacuolar protein sorting (VPS) genes. The encoded protein is a component of a large multimeric complex, termed the retromer complex, involved in retrograde transport of proteins from endosomes to the trans-Golgi network. The close structural similarity between the yeast and human proteins that make up this complex suggests a similarity in function. Expression studies in yeast and mammalian cells indicate that this protein interacts directly with VPS35, which serves as the core of the retromer complex. Alternative splicing results in multiple transcript variants encoding different isoforms. [provided by RefSeq]</p>
Other Designations	OTTHUMP00000019721 vacuolar protein sorting 26 A

## Disease

- [Alzheimer disease](#)
- [Genetic Predisposition to Disease](#)
- [Urinary Bladder Neoplasms](#)