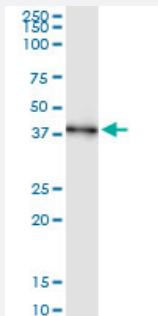


AIM2 (Human) IP-WB Antibody Pair

Catalog # H00009447-PW1

Size 1 Set

Applications



Immunoprecipitation of AIM2 transfected lysate using rabbit polyclonal anti-AIM2 and Protein A Magnetic Bead ([U0007](#)), and immunoblotted with mouse purified polyclonal anti-AIM2.

Specification

Product Description	This IP-WB antibody pair set comes with one antibody for immunoprecipitation and another to detect the precipitated protein in western blot.
Reactivity	Human
Interspecies Antigen Sequence	Mouse (55)
Quality Control Testing	Immunoprecipitation-Western Blot (IP-WB) Immunoprecipitation of AIM2 transfected lysate using rabbit polyclonal anti-AIM2 and Protein A Magnetic Bead (U0007), and immunoblotted with mouse purified polyclonal anti-AIM2.
Supplied Product	Antibody pair set content: 1. Antibody pair for IP: rabbit polyclonal anti-AIM2 (300 ul) 2. Antibody pair for WB: mouse purified polyclonal anti-AIM2 (50 ug)
Storage Instruction	Store reagents of the antibody pair set at -20°C or lower. Please aliquot to avoid repeated freeze thaw cycle. Reagents should be returned to -20°C storage immediately after use.

Applications

- Immunoprecipitation-Western Blot

[Protocol Download](#)

Gene Info — AIM2

Entrez GeneID	9447
Gene Name	AIM2
Gene Alias	PYHIN4
Gene Description	absent in melanoma 2
Omim ID	604578
Gene Ontology	Hyperlink
Gene Summary	AIM2 is a member of the IFI20X /IFI16 family. It plays a putative role in tumorigenic reversion and may control cell proliferation. Interferon-gamma induces expression of AIM2. [provided by RefSeq]
Other Designations	OTTHUMP00000035296

Disease

- [Genetic Predisposition to Disease](#)
- [Lupus Erythematosus](#)