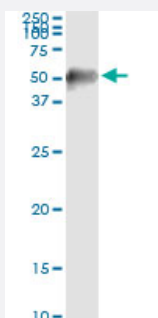


# MAPKAPK2 (Human) IP-WB Antibody Pair

Catalog # H00009261-PW2

Size 1 Set

## Applications



Immunoprecipitation of MAPKAPK2 transfected lysate using mouse monoclonal anti-MAPKAPK2 and Protein A Magnetic Bead ([U0007](#)), and immunoblotted with rabbit polyclonal anti-MAPKAPK2.

## Specification

<b>Product Description</b>	This IP-WB antibody pair set comes with one antibody for immunoprecipitation and another to detect the precipitated protein in western blot.
<b>Reactivity</b>	Human
<b>Interspecies Antigen Sequence</b>	Mouse (92); Rat (92)
<b>Quality Control Testing</b>	Immunoprecipitation-Western Blot (IP-WB) Immunoprecipitation of MAPKAPK2 transfected lysate using mouse monoclonal anti-MAPKAPK2 and Protein A Magnetic Bead ( <a href="#">U0007</a> ), and immunoblotted with rabbit polyclonal anti-MAPKAPK2.
<b>Supplied Product</b>	Antibody pair set content: 1. Antibody pair for IP: mouse monoclonal anti-MAPKAPK2 (300 ug) 2. Antibody pair for WB: rabbit polyclonal anti-MAPKAPK2 (50 ul)
<b>Storage Instruction</b>	Store reagents of the antibody pair set at -20°C or lower. Please aliquot to avoid repeated freeze thaw cycle. Reagents should be returned to -20°C storage immediately after use.

## Applications

- Immunoprecipitation-Western Blot

[Protocol Download](#)

## Gene Info — MAPKAPK2

**Entrez GeneID** [9261](#)

**Gene Name** MAPKAPK2

**Gene Alias** MK2

**Gene Description** mitogen-activated protein kinase-activated protein kinase 2

**Omim ID** [602006](#)

**Gene Ontology** [Hyperlink](#)

**Gene Summary** This gene encodes a member of the Ser/Thr protein kinase family. This kinase is regulated through direct phosphorylation by p38 MAP kinase. In conjunction with p38 MAP kinase, this kinase is known to be involved in many cellular processes including stress and inflammatory responses, nuclear export, gene expression regulation and cell proliferation. Heat shock protein HSP27 was shown to be one of the substrates of this kinase in vivo. Two transcript variants encoding two different isoforms have been found for this gene. [provided by RefSeq]

**Other Designations** OTTHUMP00000034531|OTTHUMP00000034532

## Pathway

- [MAPK signaling pathway](#)
- [Neurotrophin signaling pathway](#)
- [VEGF signaling pathway](#)