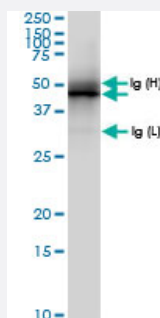


MAPKAPK2 (Human) IP-WB Antibody Pair

Catalog # H00009261-PW1

Size 1 Set

Applications



Immunoprecipitation of MAPKAPK2 transfected lysate using rabbit polyclonal anti-MAPKAPK2 and Protein A Magnetic Bead ([U0007](#)), and immunoblotted with rabbit polyclonal anti-MAPKAPK2.

Specification

Product Description	This IP-WB antibody pair set comes with one antibody for immunoprecipitation and another to detect the precipitated protein in western blot.
Reactivity	Human
Interspecies Antigen Sequence	Mouse (92); Rat (92)
Quality Control Testing	Immunoprecipitation-Western Blot (IP-WB) Immunoprecipitation of MAPKAPK2 transfected lysate using rabbit polyclonal anti-MAPKAPK2 and Protein A Magnetic Bead (U0007), and immunoblotted with rabbit polyclonal anti-MAPKAPK2.
Supplied Product	Antibody pair set content: 1. Antibody pair for IP: rabbit polyclonal anti-MAPKAPK2 (300 ul) 2. Antibody pair for WB: rabbit polyclonal anti-MAPKAPK2 (50 ul)
Storage Instruction	Store reagents of the antibody pair set at -20°C or lower. Please aliquot to avoid repeated freeze thaw cycle. Reagents should be returned to -20°C storage immediately after use.

Applications

- Immunoprecipitation-Western Blot

[Protocol Download](#)

Gene Info — MAPKAPK2

Entrez GeneID [9261](#)

Gene Name MAPKAPK2

Gene Alias MK2

Gene Description mitogen-activated protein kinase-activated protein kinase 2

Omim ID [602006](#)

Gene Ontology [Hyperlink](#)

Gene Summary This gene encodes a member of the Ser/Thr protein kinase family. This kinase is regulated through direct phosphorylation by p38 MAP kinase. In conjunction with p38 MAP kinase, this kinase is known to be involved in many cellular processes including stress and inflammatory responses, nuclear export, gene expression regulation and cell proliferation. Heat shock protein HSP27 was shown to be one of the substrates of this kinase in vivo. Two transcript variants encoding two different isoforms have been found for this gene. [provided by RefSeq]

Other Designations OTTHUMP00000034531|OTTHUMP00000034532

Pathway

- [MAPK signaling pathway](#)
- [Neurotrophin signaling pathway](#)
- [VEGF signaling pathway](#)