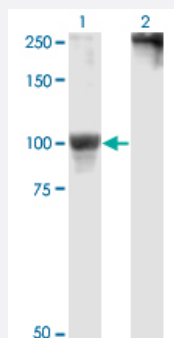


# RPS6KA5 monoclonal antibody (M01), clone 2B11

Catalog # H00009252-M01

Size 100 ug

## Applications

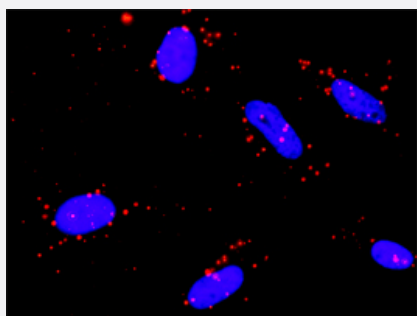


### Western Blot (Transfected lysate)

Western Blot analysis of RPS6KA5 expression in transfected 293T cell line by RPS6KA5 monoclonal antibody (M01), clone 2B11.

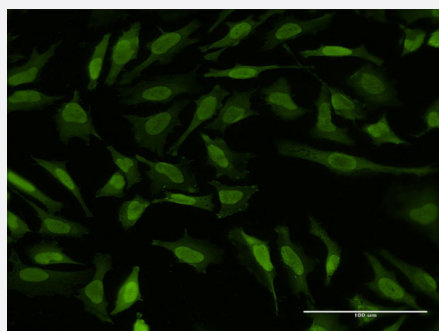
Lane 1: RPS6KA5 transfected lysate(89.9 KDa).

Lane 2: Non-transfected lysate.



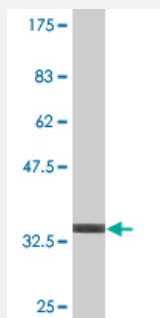
### In situ Proximity Ligation Assay (Cell)

Proximity Ligation Analysis of protein-protein interactions between NR4A1 and RPS6KA5. HeLa cells were stained with anti-NR4A1 rabbit purified polyclonal 1:1200 and anti-RPS6KA5 mouse monoclonal antibody 1:50. Each red dot represents the detection of protein-protein interaction complex, and nuclei were counterstained with DAPI (blue).



### Immunofluorescence

Immunofluorescence of monoclonal antibody to RPS6KA5 on HeLa cell .  
[antibody concentration 10 ug/ml]



Western Blot detection against Immunogen (36.63 KDa) .

## Specification

<b>Product Description</b>	Mouse monoclonal antibody raised against a partial recombinant RPS6KA5.
<b>Immunogen</b>	RPS6KA5 (AAH17187.1, 271 a.a. ~ 370 a.a) partial recombinant protein with GST tag. MW of the GST tag alone is 26 KDa.
<b>Sequence</b>	ILKSEPPYPQEMSALAKDLIQRLMKDPKKRLGCGPRDADEIKEHLFFQKINWDDLAAKKVPAPF KPVIRDELVDVSNFAEEFTMDPTYSAPALPQSSEK
<b>Host</b>	Mouse
<b>Reactivity</b>	Human
<b>Interspecies Antigen Sequence</b>	Mouse (96)
<b>Isotype</b>	IgG2b Lambda
<b>Quality Control Testing</b>	Antibody Reactive Against Recombinant Protein. Western Blot detection against Immunogen (36.63 KDa) .
<b>Storage Buffer</b>	In 1x PBS, pH 7.4
<b>Storage Instruction</b>	Store at -20°C or lower. Aliquot to avoid repeated freezing and thawing.

## Applications

- Western Blot (Transfected lysate)

Western Blot analysis of RPS6KA5 expression in transfected 293T cell line by RPS6KA5 monoclonal antibody (M01), clone 2B11.

Lane 1: RPS6KA5 transfected lysate(89.9 KDa).

Lane 2: Non-transfected lysate.

[Protocol Download](#)

- Western Blot (Recombinant protein)

[Protocol Download](#)

- ELISA

- *In situ* Proximity Ligation Assay (Cell)

Proximity Ligation Analysis of protein-protein interactions between NR4A1 and RPS6KA5. HeLa cells were stained with anti-NR4A1 rabbit purified polyclonal 1:1200 and anti-RPS6KA5 mouse monoclonal antibody 1:50. Each red dot represents the detection of protein-protein interaction complex, and nuclei were counterstained with DAPI (blue).

- Immunofluorescence

Immunofluorescence of monoclonal antibody to RPS6KA5 on HeLa cell . [antibody concentration 10 ug/ml]

## Gene Info — RPS6KA5

Entrez GeneID	<a href="#">9252</a>
GeneBank Accession#	<a href="#">BC017187</a>
Protein Accession#	<a href="#">AAH17187.1</a>
Gene Name	RPS6KA5
Gene Alias	MGC1911, MSK1, MSPK1, RLPK
Gene Description	ribosomal protein S6 kinase, 90kDa, polypeptide 5
Omim ID	<a href="#">603607</a>
Gene Ontology	<a href="#">Hyperlink</a>
Gene Summary	90kDa
Other Designations	mitogen- and stress-activated protein kinase 1 ribosomal protein S6 kinase, 90kD, polypeptide 5

## Pathway

- [Bladder cancer](#)
- [MAPK signaling pathway](#)
- [Neurotrophin signaling pathway](#)

## Disease

- [Genetic Predisposition to Disease](#)
- [Tobacco Use Disorder](#)
- [Urinary Bladder Neoplasms](#)