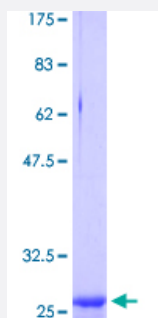


# CLDN2 (Human) Recombinant Protein (Q02)

Catalog # H00009075-Q02

Size 25 ug, 10 ug

## Applications



## Specification

<b>Product Description</b>	Human CLDN2 partial ORF (NP_065117.1, 138 a.a. - 163 a.a.) recombinant protein with GST-tag at N-terminal.
<b>Sequence</b>	WNLHGILRDFYSPLVPDSMKFEIGEA
<b>Host</b>	Wheat Germ (in vitro)
<b>Theoretical MW (kDa)</b>	28.49
<b>Interspecies Antigen Sequence</b>	Mouse (91); Rat (91)
<b>Preparation Method</b>	<a href="#">in vitro wheat germ expression system</a>
<b>Purification</b>	Glutathione Sepharose 4 Fast Flow
<b>Quality Control Testing</b>	12.5% SDS-PAGE Stained with Coomassie Blue
<b>Storage Buffer</b>	50 mM Tris-HCl, 10 mM reduced Glutathione, pH=8.0 in the elution buffer.
<b>Storage Instruction</b>	Store at -80°C. Aliquot to avoid repeated freezing and thawing.
<b>Note</b>	Best use within three months from the date of receipt of this protein.

## Applications

- Enzyme-linked Immunoabsorbent Assay
- Western Blot (Recombinant protein)
- Antibody Production
- Protein Array

## Gene Info — CLDN2

Entrez GeneID	<a href="#">9075</a>
GeneBank Accession#	<a href="#">NM_020384</a>
Protein Accession#	<a href="#">NP_065117.1</a>
Gene Name	CLDN2
Gene Alias	-
Gene Description	claudin 2
Omim ID	<a href="#">300520</a>
Gene Ontology	<a href="#">Hyperlink</a>
Gene Summary	Members of the claudin protein family, such as CLDN2, are expressed in an organ-specific manner and regulate the tissue-specific physiologic properties of tight junctions (Sakaguchi et al., 2002 [PubMed 11934881]).[supplied by OMIM]
Other Designations	OTTHUMP00000023793

## Pathway

- [Cell adhesion molecules \(CAMs\)](#)
- [Leukocyte transendothelial migration](#)
- [Tight junction](#)