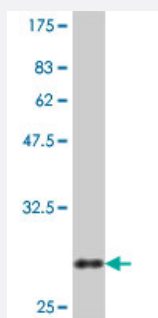


CLDN2 polyclonal antibody (A01)

Catalog # H00009075-A01

Size 50 uL

Applications



Western Blot detection against Immunogen (31.83 KDa) .

Specification

Product Description	Mouse polyclonal antibody raised against a partial recombinant CLDN2.
Immunogen	CLDN2 (NP_065117, 29 a.a. ~ 80 a.a) partial recombinant protein with GST tag.
Sequence	SWKTSSYVGASMTAVGFSKGLWMECATHSTGITQCDIYSTLLGLPADIQAA
Host	Mouse
Reactivity	Human
Interspecies Antigen Sequence	Mouse (91); Rat (91)
Quality Control Testing	Antibody Reactive Against Recombinant Protein. Western Blot detection against Immunogen (31.83 KDa) .
Storage Buffer	50 % glycerol
Storage Instruction	Store at -20°C or lower. Aliquot to avoid repeated freezing and thawing.

Applications

- Western Blot (Recombinant protein)

[Protocol Download](#)

- ELISA

Gene Info — CLDN2

Entrez GeneID [9075](#)

GeneBank Accession# [NM_020384](#)

Protein Accession# [NP_065117](#)

Gene Name CLDN2

Gene Alias -

Gene Description claudin 2

Omim ID [300520](#)

Gene Ontology [Hyperlink](#)

Gene Summary Members of the claudin protein family, such as CLDN2, are expressed in an organ-specific manner and regulate the tissue-specific physiologic properties of tight junctions (Sakaguchi et al., 2002 [PubMed 11934881]).[supplied by OMIM]

Other Designations OTTHUMP00000023793

Pathway

- [Cell adhesion molecules \(CAMs\)](#)
- [Leukocyte transendothelial migration](#)
- [Tight junction](#)