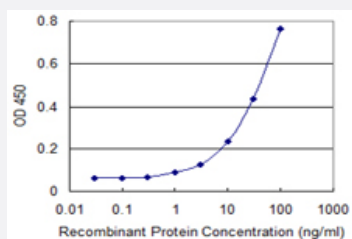


# CCNA1 monoclonal antibody (M02), clone 4A11-5B5

Catalog # H00008900-M02

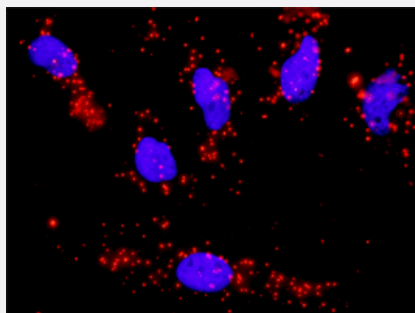
Size 100 ug

## Applications



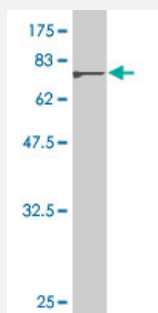
### Sandwich ELISA (Recombinant protein)

Detection limit for recombinant GST tagged CCNA1 is 0.3 ng/ml as a capture antibody.



### In situ Proximity Ligation Assay (Cell)

Proximity Ligation Analysis of protein-protein interactions between PTK2 and CCNA1. HeLa cells were stained with anti-PTK2 rabbit purified polyclonal 1:1200 and anti-CCNA1 mouse monoclonal antibody 1:50. Each red dot represents the detection of protein-protein interaction complex, and nuclei were counterstained with DAPI (blue).



Western Blot detection against Immunogen (76.78 KDa) .

## Specification

### Product Description

Mouse monoclonal antibody raised against a full length recombinant CCNA1.

Immunogen	CCNA1 (AAH36346, 1 a.a. ~ 464 a.a) full-length recombinant protein with GST tag. MW of the GST tag alone is 26 KDa.
Sequence	METGFPAIMYPGSFIGGWGEEYLSWEGPGLPDFVFQQPVESEAMHCSNPKSGVVLATVARGPD ACQILTRAPLGQDPPQRTVLGLLTANGQYRRTCGQGIRIRCYSGSENAFPAGKKALPDCGVQE PPKQGFDIYMDELEQGDRDSCSVREGMAFEDVYEVDGTGLKSDLHFLDFNTVSPMLVDSSLLS QSEDISSLGTDVINVTEYAEELYQLREAEIRHRPKAHYMKKQPDITEGMRTILVDWLVEVGEEYKLR AETLYLAVNFLDRFLSCMSVLRGKLQLVGTAAMLLASKYEEIYPPEVDEFVYITDDTYTKRQLLKME HLLLKVLAFDLTVPTTNQFLLQYLRRQGV CVRTENLAKYVAELSLEADPFLKYLPSLIAAAAFCLA NYTVNKHFWPETLAAFTGYSLSEMPCLSELHKAYLDIPHRPQQAIREKYKASKYLCVSLMEPPAVL LLQ
Host	Mouse
Reactivity	Human
Interspecies Antigen Sequence	Mouse (84); Rat (84)
Isotype	IgG1 Kappa
Quality Control Testing	Antibody Reactive Against Recombinant Protein. Western Blot detection against Immunogen (76.78 KDa) .
Storage Buffer	In 1x PBS, pH 7.4
Storage Instruction	Store at -20°C or lower. Aliquot to avoid repeated freezing and thawing.

## Applications

- Western Blot (Recombinant protein)

[Protocol Download](#)

- Sandwich ELISA (Recombinant protein)

Detection limit for recombinant GST tagged CCNA1 is 0.3 ng/ml as a capture antibody.

[Protocol Download](#)

- ELISA

- In situ* Proximity Ligation Assay (Cell)

Proximity Ligation Analysis of protein-protein interactions between PTK2 and CCNA1. HeLa cells were stained with anti-PTK2 rabbit purified polyclonal 1:1200 and anti-CCNA1 mouse monoclonal antibody 1:50. Each red dot represents the detection of protein-protein interaction complex, and nuclei were counterstained with DAPI (blue).

## Gene Info — CCNA1

Entrez GeneID [8900](#)

GeneBank Accession# [BC036346](#)

Protein Accession# [AAH36346](#)

Gene Name CCNA1

Gene Alias -

Gene Description cyclin A1

Omim ID [604036](#)

Gene Ontology [Hyperlink](#)

**Gene Summary**

The protein encoded by this gene belongs to the highly conserved cyclin family, whose members are characterized by a dramatic periodicity in protein abundance through the cell cycle. Cyclins function as regulators of CDK kinases. Different cyclins exhibit distinct expression and degradation patterns which contribute to the temporal coordination of each mitotic event. The cyclin encoded by this gene was shown to be expressed in testis and brain, as well as in several leukemic cell lines, and is thought to primarily function in the control of the germline meiotic cell cycle. This cyclin binds both CDK2 and CDC2 kinases, which give two distinct kinase activities, one appearing in S phase, the other in G2, and thus regulate separate functions in cell cycle. This cyclin was found to bind to important cell cycle regulators, such as Rb family proteins, transcription factor E2F-1, and the p21 family proteins. Multiple transcript variants encoding different isoforms have been found for this gene. [provided by RefSeq]

Other Designations -

## Pathway

- [Acute myeloid leukemia](#)
- [Cell cycle](#)
- [Pathways in cancer](#)

## Disease

- [Genetic Predisposition to Disease](#)

- [Infertility](#)
- [Ovarian Neoplasms](#)