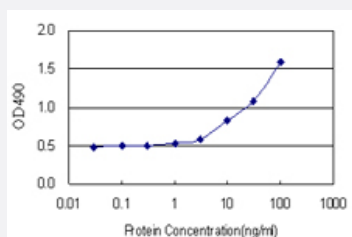


MAPKAPK5 (Human) Matched Antibody Pair

Catalog # H00008550-AP21 Size 1 Set

Applications



Sandwich ELISA detection sensitivity ranging from 3 ng/ml to 100 ng/ml.

Specification

Product Description	This antibody pair set comes with a matched antibody pair to detect and quantify the protein level of human MAPKAPK5.
Reactivity	Human
Interspecies Antigen Sequence	Mouse (96); Rat (95)
Quality Control Testing	Standard curve using recombinant protein (H00008550-P01) as an analyte. Sandwich ELISA detection sensitivity ranging from 3 ng/ml to 100 ng/ml.
Supplied Product	Antibody pair set content: 1. Capture antibody: rabbit MaxPab® affinity purified polyclonal anti-MAPKAPK5 (100 ug) 2. Detection antibody: mouse purified polyclonal anti-MAPKAPK5 (20 ug) *Reagents are sufficient for at least 1-2 x 96 well plates using recommended protocols.
Storage Instruction	Store reagents of the antibody pair set at -20°C or lower. Please aliquot to avoid repeated freeze thaw cycle. Reagents should be returned to -20°C storage immediately after use.

Applications

- ELISA Pair (Recombinant protein)

[Protocol Download](#)

Gene Info — MAPKAPK5

Entrez GeneID [8550](#)

Gene Name MAPKAPK5

Gene Alias PRAK

Gene Description mitogen-activated protein kinase-activated protein kinase 5

Omim ID [606723](#)

Gene Ontology [Hyperlink](#)

Gene Summary The protein encoded by this gene is a member of the serine/threonine kinase family. In response to cellular stress and proinflammatory cytokines, this kinase is activated through its phosphorylation by MAP kinases including MAPK1/ERK, MAPK14/p38-alpha, and MAPK11/p38-beta. In vitro, this kinase phosphorylates heat shock protein HSP27 at its physiologically relevant sites. Two alternatively spliced transcript variants of this gene encoding distinct isoforms have been reported. [provided by RefSeq]

Other Designations p38-regulated/activated protein kinase

Pathway

- [MAPK signaling pathway](#)