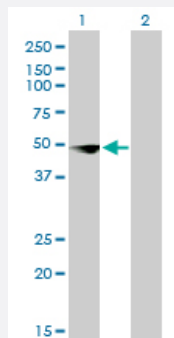


CSDA monoclonal antibody (M02), clone 4D9

Catalog # H00008531-M02

Size 100 ug

Applications

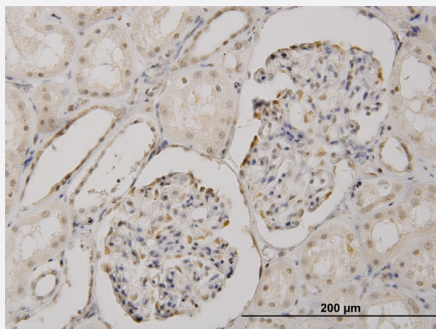


Western Blot (Transfected lysate)

Western Blot analysis of CSDA expression in transfected 293T cell line by CSDA monoclonal antibody (M02), clone 4D9.

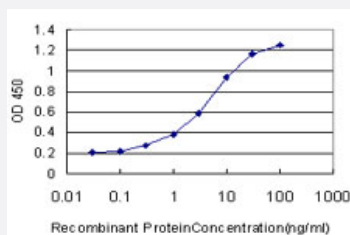
Lane 1: CSDA transfected lysate(40.1 KDa).

Lane 2: Non-transfected lysate.



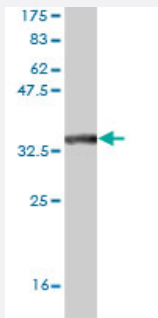
Immunohistochemistry (Formalin/PFA-fixed paraffin-embedded sections)

Immunoperoxidase of monoclonal antibody to CSDA on formalin-fixed paraffin-embedded human kidney. [antibody concentration 3 ug/ml]



Sandwich ELISA (Recombinant protein)

Detection limit for recombinant GST tagged CSDA is approximately 0.3ng/ml as a capture antibody.



Western Blot detection against Immunogen (35.64 KDa) .

Specification

| | |
|--------------------------------------|---|
| Product Description | Mouse monoclonal antibody raised against a partial recombinant CSDA. |
| Immunogen | CSDA (NP_003642, 241 a.a. ~ 330 a.a) partial recombinant protein with GST tag. MW of the GST tag alone is 26 KDa. |
| Sequence | HVGQTFDRRSRVLPHPNRIQAGEIGEMKDGVPGEAQLQGPVHRNPTYRPRYRSRGPPRPRPAPAVGEAEDKENQQATSGPNQPSVRRGYR |
| Host | Mouse |
| Reactivity | Human |
| Interspecies Antigen Sequence | Mouse (84); Rat (87) |
| Isotype | IgG2b Kappa |
| Quality Control Testing | Antibody Reactive Against Recombinant Protein. Western Blot detection against Immunogen (35.64 KDa) . |
| Storage Buffer | In 1x PBS, pH 7.4 |
| Storage Instruction | Store at -20°C or lower. Aliquot to avoid repeated freezing and thawing. |

Applications

- Western Blot (Transfected lysate)

Western Blot analysis of CSDA expression in transfected 293T cell line by CSDA monoclonal antibody (M02), clone 4D9.

Lane 1: CSDA transfected lysate(40.1 KDa).

Lane 2: Non-transfected lysate.

[Protocol Download](#)

- Western Blot (Recombinant protein)

[Protocol Download](#)

- Immunohistochemistry (Formalin/PFA-fixed paraffin-embedded sections)

Immunoperoxidase of monoclonal antibody to CSDA on formalin-fixed paraffin-embedded human kidney. [antibody concentration 3 ug/ml]

[Protocol Download](#)

- Sandwich ELISA (Recombinant protein)

Detection limit for recombinant GST tagged CSDA is approximately 0.3ng/ml as a capture antibody.

[Protocol Download](#)

- ELISA

Gene Info — CSDA

Entrez GeneID [8531](#)

GeneBank Accession# [NM_003651](#)

Protein Accession# [NP_003642](#)

Gene Name CSDA

Gene Alias CSDA1, DBPA, ZONAB

Gene Description cold shock domain protein A

Omim ID [603437](#)

Gene Ontology [Hyperlink](#)

Other Designations Cold-shock domain protein A|cold-shock domain containing A1

Pathway

- [Tight junction](#)

Disease

- [Celiac Disease](#)
- [Genetic Predisposition to Disease](#)