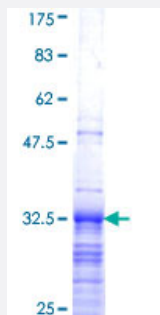


# HIST1H3G (Human) Recombinant Protein (Q01)

Catalog # H00008355-Q01

Size 25 ug, 10 ug

## Applications



## Specification

<b>Product Description</b>	Human HIST1H3G partial ORF ( NP_003525, 1 a.a. - 60 a.a.) recombinant protein with GST-tag at N-terminal.
<b>Sequence</b>	MARTKQTARKSTGGKAPRKQLATKAARKSAPATGGVKKPHRYRPGTVALREIRRYQKSTE
<b>Host</b>	Wheat Germ (in vitro)
<b>Theoretical MW (kDa)</b>	32.34
<b>Preparation Method</b>	<a href="#">in vitro wheat germ expression system</a>
<b>Purification</b>	Glutathione Sepharose 4 Fast Flow
<b>Quality Control Testing</b>	12.5% SDS-PAGE Stained with Coomassie Blue.
<b>Storage Buffer</b>	50 mM Tris-HCl, 10 mM reduced Glutathione, pH=8.0 in the elution buffer.
<b>Storage Instruction</b>	Store at -80°C. Aliquot to avoid repeated freezing and thawing.
<b>Note</b>	Best use within three months from the date of receipt of this protein.

## Applications

- Enzyme-linked Immunoabsorbent Assay
- Western Blot (Recombinant protein)
- Antibody Production
- Protein Array

## Gene Info — HIST1H3G

Entrez GeneID [8355](#)

GeneBank Accession# [NM\\_003534](#)

Protein Accession# [NP\\_003525](#)

Gene Name HIST1H3G

Gene Alias H3/h, H3FH

Gene Description histone cluster 1, H3g

Omim ID [602815](#)

Gene Ontology [Hyperlink](#)

**Gene Summary** Histones are basic nuclear proteins that are responsible for the nucleosome structure of the chromosomal fiber in eukaryotes. Two molecules of each of the four core histones (H2A, H2B, H3, and H4) form an octamer, around which approximately 146 bp of DNA is wrapped in repeating units, called nucleosomes. The linker histone, H1, interacts with linker DNA between nucleosomes and functions in the compaction of chromatin into higher order structures. This gene is intronless and encodes a member of the histone H3 family. Transcripts from this gene lack polyA tails but instead contain a palindromic termination element. This gene is found in the large histone gene cluster on chromosome 6. [provided by RefSeq]

**Other Designations** H3 histone family, member H|OTTHUMP00000016152|histone 1, H3g

## Pathway

- [Systemic lupus erythematosus](#)