

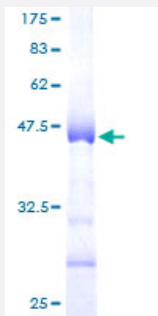
Full-Length

HIST1H3D (Human) Recombinant Protein (P01)

Catalog # H00008351-P01

Size 25 ug, 10 ug

Applications



Specification

Product Description	Human HIST1H3D full-length ORF (AAH31333, 1 a.a. - 136 a.a.) recombinant protein with GST-tag at N-terminal.
Sequence	MARTKQTARKSTGGKAPRKQLATKAARKSAPATGGVKKPHRYRPGTVALREIRRYQKSTELLIRKL PFQRLVREIAQDFKTDLRQSSAVMALQEACEAYLVGLFEDTNLCAIHAKRVTIMPKDIQLARRIRG ERA
Host	Wheat Germ (in vitro)
Theoretical MW (kDa)	40.7
Interspecies Antigen Sequence	Rat (98)
Preparation Method	in vitro wheat germ expression system
Purification	Glutathione Sepharose 4 Fast Flow
Quality Control Testing	12.5% SDS-PAGE Stained with Coomassie Blue.
Storage Buffer	50 mM Tris-HCl, 10 mM reduced Glutathione, pH=8.0 in the elution buffer.
Storage Instruction	Store at -80°C. Aliquot to avoid repeated freezing and thawing.

Note

Best use within three months from the date of receipt of this protein.

Applications

- Enzyme-linked Immunoabsorbent Assay
- Western Blot (Recombinant protein)
- Antibody Production
- Protein Array

Gene Info — HIST1H3D

Entrez GeneID [8351](#)

GeneBank Accession# [BC031333](#)

Protein Accession# [AAH31333](#)

Gene Name HIST1H3D

Gene Alias H3/b, H3FB

Gene Description histone cluster 1, H3d

Omim ID [602811](#)

Gene Ontology [Hyperlink](#)

Gene Summary Histones are basic nuclear proteins that are responsible for the nucleosome structure of the chromosomal fiber in eukaryotes. Two molecules of each of the four core histones (H2A, H2B, H3, and H4) form an octamer, around which approximately 146 bp of DNA is wrapped in repeating units, called nucleosomes. The linker histone, H1, interacts with linker DNA between nucleosomes and functions in the compaction of chromatin into higher order structures. This gene is intronless and encodes a member of the histone H3 family. Transcripts from this gene lack polyA tails but instead contain a palindromic termination element. This gene is found in the large histone gene cluster on chromosome 6. [provided by RefSeq]

Other Designations H3 histone family, member B|OTTHUMP00000016149|histone 1, H3d

Pathway

- [Systemic lupus erythematosus](#)