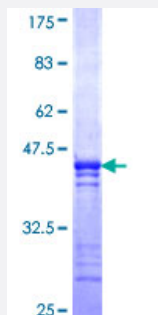


COLQ (Human) Recombinant Protein (Q01)

Catalog # H00008292-Q01

Size 25 ug, 10 ug

Applications



Specification

Product Description	Human COLQ partial ORF (NP_005668, 356 a.a. - 455 a.a.) recombinant protein with GST-tag at N-terminal.
Sequence	PIQLTPFYVPDYADQHGTCGDGLLQPGEECDGNSDVGGDCIRCHRAYCGDGHRHEGVEDCD GSDFGYLTCEYLPGSYGDLCCTQYCYIDSTPCRYFT
Host	Wheat Germ (in vitro)
Theoretical MW (kDa)	36.74
Interspecies Antigen Sequence	Mouse (87); Rat (80)
Preparation Method	in vitro wheat germ expression system
Purification	Glutathione Sepharose 4 Fast Flow
Quality Control Testing	12.5% SDS-PAGE Stained with Coomassie Blue.
Storage Buffer	50 mM Tris-HCl, 10 mM reduced Glutathione, pH=8.0 in the elution buffer.
Storage Instruction	Store at -80°C. Aliquot to avoid repeated freezing and thawing.
Note	Best use within three months from the date of receipt of this protein.

Applications

- Enzyme-linked Immunoabsorbent Assay
- Western Blot (Recombinant protein)
- Antibody Production
- Protein Array

Gene Info — COLQ

Entrez GeneID	8292
GeneBank Accession#	NM_005677
Protein Accession#	NP_005668
Gene Name	COLQ
Gene Alias	EAD
Gene Description	collagen-like tail subunit (single strand of homotrimer) of asymmetric acetylcholinesterase
Omim ID	603033 603034
Gene Ontology	Hyperlink
Gene Summary	This gene encodes the subunit of a collagen-like molecule associated with acetylcholinesterase in skeletal muscle. Each molecule is composed of three identical subunits. Each subunit contains a proline-rich attachment domain (PRAD) that binds an acetylcholinesterase tetramer to anchor the catalytic subunit of the enzyme to the basal lamina. Mutations in this gene are associated with end plate acetylcholinesterase deficiency. Multiple transcript variants encoding different isoforms have been found for this gene. [provided by RefSeq]
Other Designations	ACHE Q subunit acetylcholinesterase collagen-like tail subunit acetylcholinesterase-associated collagen collagenic tail of endplate acetylcholinesterase single strand of homotrimeric collagen-like tail subunit of asymmetric acetylcholinesterase