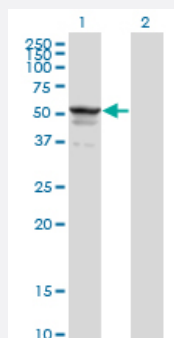


SYMPK monoclonal antibody (M03), clone 4C2

Catalog # H00008189-M03

Size 100 ug

Applications

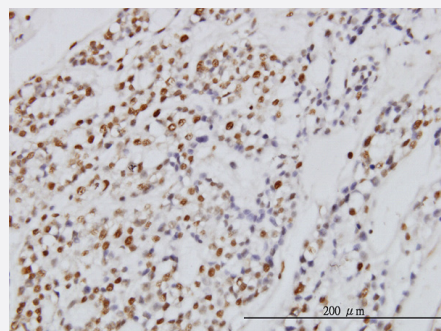


Western Blot (Transfected lysate)

Western Blot analysis of SYMPK expression in transfected 293T cell line by SYMPK monoclonal antibody (M03), clone 4C2.

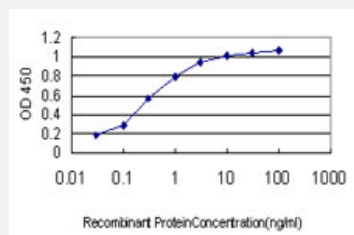
Lane 1: SYMPK transfected lysate(58.9 kDa).

Lane 2: Non-transfected lysate.



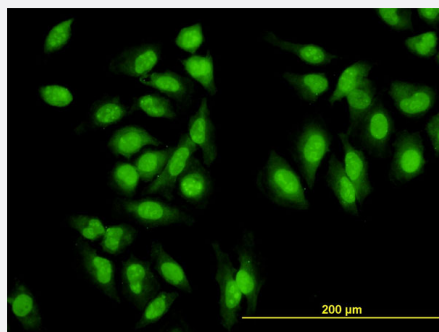
Immunohistochemistry (Formalin/PFA-fixed paraffin-embedded sections)

Immunoperoxidase of monoclonal antibody to SYMPK on formalin-fixed paraffin-embedded human ovary, clear cell carcinoma. [antibody concentration 3 ug/ml]



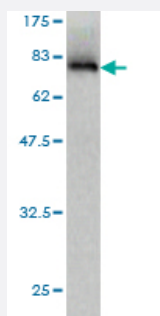
Sandwich ELISA (Recombinant protein)

Detection limit for recombinant GST tagged SYMPK is approximately 0.03ng/ml as a capture antibody.



Immunofluorescence

Immunofluorescence of monoclonal antibody to SYMPK on HeLa cell. [antibody concentration 10 ug/ml]



Western Blot detection against Immunogen (84.37 KDa) .

Specification

Product Description	Mouse monoclonal antibody raised against a full length recombinant SYMPK.
Immunogen	SYMPK (AAH30214, 1 a.a. ~ 533 a.a) full-length recombinant protein with GST tag. MW of the GST tag alone is 26 KDa.
Sequence	MASGSGDSVTRRSVASQFFTQEEGPGIDGMTTSERVVDLLNQAALITNDSKITVLKQVQELIINKDP TLLDNFLDEIIAFQADKSIEVRKFVIGFIEEACKRDIELLLKLIANLNMLLRDENVNVKKAILTMTQLY KVALQWMVKSRVISELQEACWDMVSAMAGDIILLDSDNDGIRTHAIKFVEGLVTLSPRMADSEIP RRQEHDISLDRIPRDHPYIQYNVLWEEGKAALEQLLKFMVHPAISSINLTALGSLANIARQRPMFM SEVIQAYETLHANLPPTLAKSQVSSVRKNLKLHLLSVLKHPASLEFQAQITLLVDLGTQPAEIARN MPSSKDRKRPRDDSDSTLKKMKLEPNLGEDDEDKDLEPGPSGTSKASAQISGQSDTDITAEFL QPLLTPDNVANLVLISMVYLPEAMPASFQAYTPVESAGTEAQIKHLARLMATQMTAAGLPGVGEQ TKQCKEEPKEEKVVKTESVLIKRRLSAQGQAISVVGSLSSMSPLEEEEAPQAKRRPEPIIPVTQPR
Host	Mouse
Reactivity	Human
Interspecies Antigen Sequence	Mouse (97); Rat (97)
Isotype	IgG1 Kappa
Quality Control Testing	Antibody Reactive Against Recombinant Protein. Western Blot detection against Immunogen (84.37 KDa) .

Storage Buffer

In 1x PBS, pH 7.4

Storage Instruction

Store at -20°C or lower. Aliquot to avoid repeated freezing and thawing.

Applications

- Western Blot (Transfected lysate)

Western Blot analysis of SYMPK expression in transfected 293T cell line by SYMPK monoclonal antibody (M03), clone 4C2.

Lane 1: SYMPK transfected lysate(58.9 KDa).

Lane 2: Non-transfected lysate.

[Protocol Download](#)

- Western Blot (Recombinant protein)

[Protocol Download](#)

- Immunohistochemistry (Formalin/PFA-fixed paraffin-embedded sections)

Immunoperoxidase of monoclonal antibody to SYMPK on formalin-fixed paraffin-embedded human ovary, clear cell carcinoma.
[antibody concentration 3 ug/ml]

[Protocol Download](#)

- Sandwich ELISA (Recombinant protein)

Detection limit for recombinant GST tagged SYMPK is approximately 0.03ng/ml as a capture antibody.

[Protocol Download](#)

- ELISA

- Immunofluorescence

Immunofluorescence of monoclonal antibody to SYMPK on HeLa cell. [antibody concentration 10 ug/ml]

Gene Info — SYMPK

Entrez GeneID[8189](#)**GeneBank Accession#**[BC030214](#)**Protein Accession#**[AAH30214](#)**Gene Name**

SYMPK

Gene Alias	FLJ27092, SPK, SYM
Gene Description	symplekin
Omim ID	602388
Gene Ontology	Hyperlink
Gene Summary	<p>This gene encodes a nuclear protein that functions in the regulation of polyadenylation and promotes gene expression. The protein forms a high-molecular weight complex with components of the polyadenylation machinery. It is thought to serve as a scaffold for recruiting regulatory factors to the polyadenylation complex. It also participates in 3'-end maturation of histone mRNAs, which do not undergo polyadenylation. The protein also localizes to the cytoplasmic plaques of tight junctions in some cell types. [provided by RefSeq]</p>
Other Designations	-

Pathway

- [Tight junction](#)

Disease

- [Crohn Disease](#)
- [Genetic Predisposition to Disease](#)