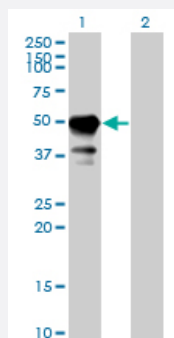


STAM monoclonal antibody (M01), clone 2B11-1G1

Catalog # H00008027-M01

Size 100 ug

Applications

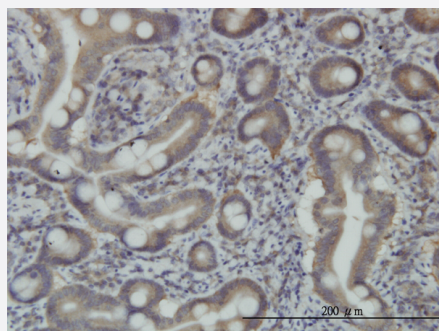


Western Blot (Transfected lysate)

Western Blot analysis of STAM expression in transfected 293T cell line by STAM monoclonal antibody (M01), clone 2B11-1G1.

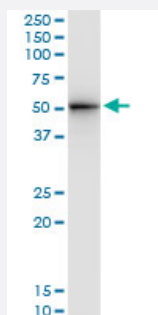
Lane 1: STAM transfected lysate(45 KDa).

Lane 2: Non-transfected lysate.



Immunohistochemistry (Formalin/PFA-fixed paraffin-embedded sections)

Immunoperoxidase of monoclonal antibody to STAM on formalin-fixed paraffin-embedded human small Intestine. [antibody concentration 3 ug/ml]

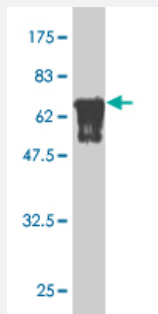
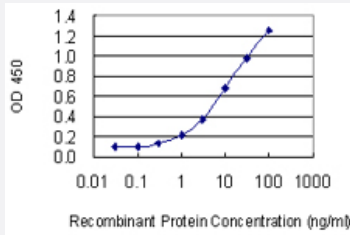


Immunoprecipitation

Immunoprecipitation of STAM transfected lysate using anti-STAM monoclonal antibody and Protein A Magnetic Bead, and immunoblotted with STAM monoclonal antibody.

Sandwich ELISA (Recombinant protein)

Detection limit for recombinant GST tagged STAM is 0.1 ng/ml as a capture antibody.



Western Blot detection against Immunogen (70.07 KDa) .

Specification

Product Description	Mouse monoclonal antibody raised against a full length recombinant STAM.
Immunogen	STAM (AAH30586, 1 a.a. ~ 403 a.a) full-length recombinant protein with GST tag. MW of the GST tag alone is 26 KDa.
Sequence	MPLFATNPFDQDVEKATSEMNTAEDWGLILDICDKVGQSRTGPKDCLRSIMRRVNHKDPHVAMQ ALTLLGACVSNCGKIFHLEVCSRDFASEVSNVLNKGHPKVCEKLKALMVEWTDEFKNDPQLSLIS AMIKNLKEQGVTFPAIGSQAAEQAKASPALVAKDPGTVANKKEEEDLAKAIELSLKEQRQQSTTL STLYPSTSSLLTNHQHEGRKVRAYDFAAEDNELTFKAGEIITVLDDSDPNWWWKGETHQGIGLFP SNFVTAYLTAEPEMIKTEKKTQVFSDDVQVETIEPEPEPAFIDEDKMDQLLQMLQSTDPSDDQPD LPELLHLEAMCHQMGPLIDEKLEDIDRKHSELSENLVKVMEALSPLYTKLMNEDPMYSMYAKLQNQ PGSGPTIRKPSPS
Host	Mouse
Reactivity	Human
Isotype	IgG1 Kappa
Quality Control Testing	Antibody Reactive Against Recombinant Protein. Western Blot detection against Immunogen (70.07 KDa) .
Storage Buffer	In 1x PBS, pH 7.4
Storage Instruction	Store at -20°C or lower. Aliquot to avoid repeated freezing and thawing.

Applications

- Western Blot (Transfected lysate)

Western Blot analysis of STAM expression in transfected 293T cell line by STAM monoclonal antibody (M01), clone 2B11-1G1.

Lane 1: STAM transfected lysate(45 KDa).

Lane 2: Non-transfected lysate.

[Protocol Download](#)

- Western Blot (Recombinant protein)

[Protocol Download](#)

- Immunohistochemistry (Formalin/PFA-fixed paraffin-embedded sections)

Immunoperoxidase of monoclonal antibody to STAM on formalin-fixed paraffin-embedded human small intestine. [antibody concentration 3 ug/ml]

[Protocol Download](#)

- Immunoprecipitation

Immunoprecipitation of STAM transfected lysate using anti-STAM monoclonal antibody and Protein A Magnetic Bead, and immunoblotted with STAM monoclonal antibody.

[Protocol Download](#)

- Sandwich ELISA (Recombinant protein)

Detection limit for recombinant GST tagged STAM is 0.1 ng/ml as a capture antibody.

[Protocol Download](#)

- ELISA

Gene Info — STAM

Entrez GeneID	8027
---------------	----------------------

GeneBank Accession#	BC030586
---------------------	--------------------------

Protein Accession#	AAH30586
--------------------	--------------------------

Gene Name	STAM
-----------	------

Gene Alias	DKFZp686J2352, STAM1
------------	----------------------

Gene Description	signal transducing adaptor molecule (SH3 domain and ITAM motif) 1
Omim ID	601899
Gene Ontology	Hyperlink
Gene Summary	<p>This gene was identified by the rapid tyrosine-phosphorylation of its product in response to cytokine stimulation. The encoded protein contains a SH3 domain and the immunoreceptor tyrosine-based activation motif (ITAM). This protein associates with JAK3 and JAK2 kinases via its ITAM region, and is phosphorylated by the JAK kinases upon cytokine stimulation, which suggests the function of this protein is as an adaptor molecule involved in the downstream signaling of cytokine receptors. HGS/HRS (hepatocyte growth factor-regulated tyrosine kinase substrate) has been found to bind and counteract the function of this protein. [provided by RefSeq]</p>
Other Designations	OTTHUMP00000019237 signal transducing adaptor molecule 1

Pathway

- [Endocytosis](#)
- [Jak-STAT signaling pathway](#)

Disease

- [Alzheimer Disease](#)
- [Genetic Predisposition to Disease](#)