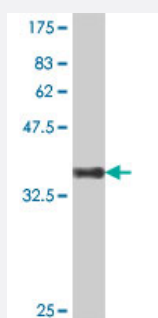


SCG2 polyclonal antibody (A01)

Catalog # H00007857-A01

Size 50 uL

Applications



Western Blot detection against Immunogen (38.21 KDa) .

Specification

Product Description	Mouse polyclonal antibody raised against a partial recombinant SCG2.
Immunogen	SCG2 (NP_003460, 508 a.a. ~ 617 a.a) partial recombinant protein with GST tag.
Sequence	LARMLVKYPEIINSNQVKRVPGGSEDDLQEEEQIEQAIKEHLNQGSSETDKLAPVSKRFPVG PPKNDDTPNRQYWDEDLLMKVLEYLNQEKAKEKGREHIAKRAMENM
Host	Mouse
Reactivity	Human
Interspecies Antigen Sequence	Mouse (78)
Quality Control Testing	Antibody Reactive Against Recombinant Protein. Western Blot detection against Immunogen (38.21 KDa) .
Storage Buffer	50 % glycerol
Storage Instruction	Store at -20°C or lower. Aliquot to avoid repeated freezing and thawing.

Applications

- Western Blot (Recombinant protein)

[Protocol Download](#)

- ELISA

Gene Info — SCG2

Entrez GeneID [7857](#)

GeneBank Accession# [NM_003469](#)

Protein Accession# [NP_003460](#)

Gene Name SCG2

Gene Alias CHGC, SN, SgII

Gene Description secretogranin II (chromogranin C)

Omim ID [118930](#)

Gene Ontology [Hyperlink](#)

Gene Summary The protein encoded by this gene is a member of the chromogranin/secretogranin family of neuro endocrine secretory proteins. Studies in rodents suggest that the full-length protein, secretogranin II, is involved in the packaging or sorting of peptide hormones and neuropeptides into secretory vesicles. The full-length protein is cleaved to produce the active peptide secretoneurin, which exerts chemotactic effects on specific cell types, and EM66, whose function is unknown. [provided by RefSeq]

Other Designations Chromogranin C (secretogranin II)|EM66|secretogranin II|secretoneurin