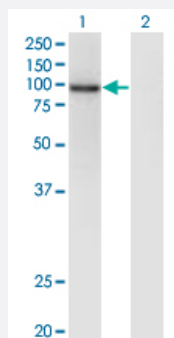


# ZNF41 monoclonal antibody (M10), clone 2D8

Catalog # H00007592-M10

Size 100 ug

## Applications

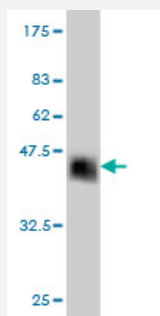


### Western Blot (Transfected lysate)

Western Blot analysis of ZNF41 expression in transfected 293T cell line by ZNF41 monoclonal antibody (M10), clone 2D8.

Lane 1: ZNF41 transfected lysate (Predicted MW: 89.1 kDa).

Lane 2: Non-transfected lysate.



Western Blot detection against Immunogen (37.11 kDa) .

## Specification

<b>Product Description</b>	Mouse monoclonal antibody raised against a partial recombinant ZNF41.
<b>Immunogen</b>	ZNF41 (NP_009061, 221 a.a. ~ 321 a.a) partial recombinant protein with GST tag. MW of the GST tag alone is 26 kDa.
<b>Sequence</b>	GNNFPHSPSSTKNENAKTGANSCEHDHYEKHLSHKQAPTHHQIHPPEEKLYVCTECVMGFTQKS HLFEHQRIHAGEKSRECDKSNKVFPQKPQVDVHPSV*
<b>Host</b>	Mouse
<b>Reactivity</b>	Human
<b>Isotype</b>	IgG1 Kappa

**Quality Control Testing**

Antibody Reactive Against Recombinant Protein.  
Western Blot detection against Immunogen (37.11 KDa) .

**Storage Buffer**

In 1x PBS, pH 7.4

**Storage Instruction**

Store at -20°C or lower. Aliquot to avoid repeated freezing and thawing.

## Applications

- Western Blot (Transfected lysate)

Western Blot analysis of ZNF41 expression in transfected 293T cell line by ZNF41 monoclonal antibody (M10), clone 2D8.

Lane 1: ZNF41 transfected lysate (Predicted MW: 89.1 KDa).

Lane 2: Non-transfected lysate.

[Protocol Download](#)

- Western Blot (Recombinant protein)

[Protocol Download](#)

- ELISA

## Gene Info — ZNF41

**Entrez GeneID**

[7592](#)

**GeneBank Accession#**

[NM\\_007130](#)

**Protein Accession#**

[NP\\_009061](#)

**Gene Name**

ZNF41

**Gene Alias**

MGC8941, MRX89

**Gene Description**

zinc finger protein 41

**Omim ID**

[314995](#)

**Gene Ontology**

[Hyperlink](#)

**Gene Summary**

This gene product is a likely zinc finger family transcription factor. It contains KRAB-A and KRAB-B domains that act as transcriptional repressors in related proteins, and multiple zinc finger DNA binding motifs and finger linking regions characteristic of the Kruppel family. This gene is part of a gene cluster on chromosome Xp11.23. Several alternatively spliced transcript variants have been described, however, the full-length nature of only some of them is known. [provided by RefSeq

**Other Designations**

OTTHUMP00000023219|OTTHUMP00000023220