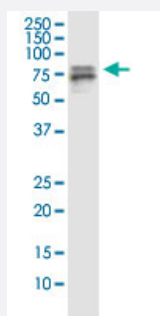


SF1 monoclonal antibody (M01), clone 2E12

Catalog # H00007536-M01

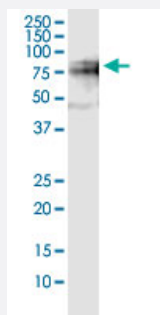
Size 100 ug

Applications



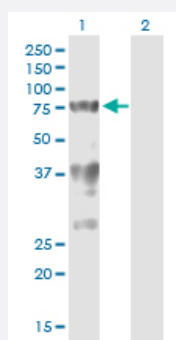
Western Blot (Cell lysate)

SF1 monoclonal antibody (M01), clone 2E12. Western Blot analysis of SF1 expression in HeLa.



Western Blot (Cell lysate)

SF1 monoclonal antibody (M01), clone 2E12. Western Blot analysis of SF1 expression in NIH/3T3.

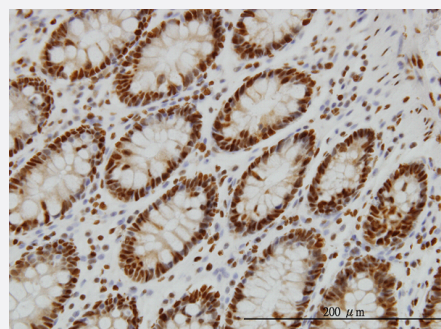


Western Blot (Transfected lysate)

Western Blot analysis of SF1 expression in transfected 293T cell line by SF1 monoclonal antibody (M01), clone 2E12.

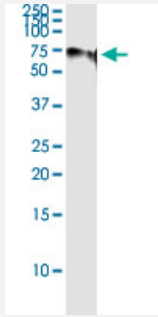
Lane 1: SF1 transfected lysate (Predicted MW: 59.7 KDa).

Lane 2: Non-transfected lysate.



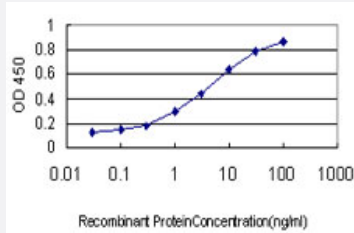
Immunohistochemistry (Formalin/PFA-fixed paraffin-embedded sections)

Immunoperoxidase of monoclonal antibody to SF1 on formalin-fixed paraffin-embedded human colon. [antibody concentration 3 ug/ml]



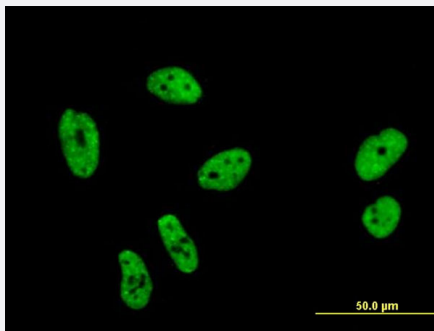
Immunoprecipitation

Immunoprecipitation of SF1 transfected lysate using anti-SF1 monoclonal antibody and Protein A Magnetic Bead, and immunoblotted with SF1 monoclonal antibody.



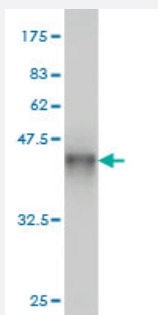
Sandwich ELISA (Recombinant protein)

Detection limit for recombinant GST tagged SF1 is approximately 0.03ng/ml as a capture antibody.



Immunofluorescence

Immunofluorescence of monoclonal antibody to SF1 on HeLa cell . [antibody concentration 10 ug/ml]



Western Blot detection against Immunogen (37.84 KDa) .

Specification

Product Description

Mouse monoclonal antibody raised against a partial recombinant SF1.

Immunogen

SF1 (NP_004621, 1 a.a. ~ 110 a.a) partial recombinant protein with GST tag. MW of the GST tag alone is 26 KDa.

Sequence	MATGANATPLDFPSKKRKRSRWNQDTMEQKTVIPGMPTVIPPGLTREQERAYIVQLQIEDLTRKLR TGD LGIPP NPEDRSPSPEPYNSEGKRLNTRFRTTRKKLEEERH
Host	Mouse
Reactivity	Human, Mouse
Isotype	IgG2a Kappa
Quality Control Testing	Antibody Reactive Against Recombinant Protein. Western Blot detection against Immunogen (37.84 KDa) .
Storage Buffer	In 1x PBS, pH 7.4
Storage Instruction	Store at -20°C or lower. Aliquot to avoid repeated freezing and thawing.

Applications

- Western Blot (Cell lysate)

SF1 monoclonal antibody (M01), clone 2E12. Western Blot analysis of SF1 expression in HeLa.

[Protocol Download](#)

- Western Blot (Cell lysate)

SF1 monoclonal antibody (M01), clone 2E12. Western Blot analysis of SF1 expression in NIH/3T3.

[Protocol Download](#)

- Western Blot (Transfected lysate)

Western Blot analysis of SF1 expression in transfected 293T cell line by SF1 monoclonal antibody (M01), clone 2E12.

Lane 1: SF1 transfected lysate (Predicted MW: 59.7 KDa).

Lane 2: Non-transfected lysate.

[Protocol Download](#)

- Western Blot (Recombinant protein)

[Protocol Download](#)

- Immunohistochemistry (Formalin/PFA-fixed paraffin-embedded sections)

Immunoperoxidase of monoclonal antibody to SF1 on formalin-fixed paraffin-embedded human colon. [antibody concentration 3 ug/ml]

[Protocol Download](#)

- Immunoprecipitation

Immunoprecipitation of SF1 transfected lysate using anti-SF1 monoclonal antibody and Protein A Magnetic Bead, and immunoblotted with SF1 monoclonal antibody.

[Protocol Download](#)

- Sandwich ELISA (Recombinant protein)

Detection limit for recombinant GST tagged SF1 is approximately 0.03ng/ml as a capture antibody.

[Protocol Download](#)

- ELISA

- Immunofluorescence

Immunofluorescence of monoclonal antibody to SF1 on HeLa cell . [antibody concentration 10 ug/ml]

Gene Info — SF1

Entrez GeneID	7536
GeneBank Accession#	NM_004630
Protein Accession#	NP_004621
Gene Name	SF1
Gene Alias	D11S636, ZFM1, ZNF162
Gene Description	splicing factor 1
Omim ID	601516
Gene Ontology	Hyperlink
Other Designations	OTTHUMP00000069749 OTTHUMP00000069750 OTTHUMP00000069752 zinc finger protein 162