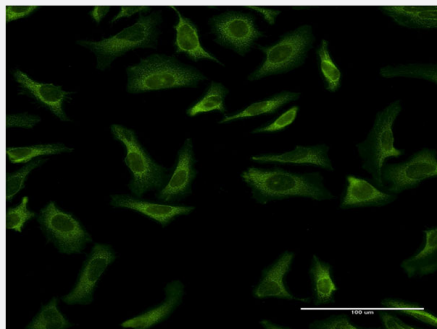


# YWHAG monoclonal antibody (M03), clone 1B4

Catalog # H00007532-M03

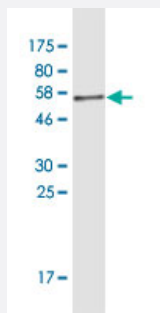
Size 100 ug

## Applications



### Immunofluorescence

Immunofluorescence of monoclonal antibody to YWHAG on HeLa cell .  
[antibody concentration 10 ug/ml]



Western Blot detection against Immunogen (52.91 KDa) .

## Specification

### Product Description

Mouse monoclonal antibody raised against a full-length recombinant YWHAG.

### Immunogen

YWHAG (AAH20963, 1 a.a. ~ 247 a.a) full-length recombinant protein with GST tag. MW of the GST tag alone is 26 KDa.

### Sequence

MVDREQLVQKARLAEQAERYDDMAAAMKNVTELNEPLSNEERNLLSVAYKNVVGARRSSWRVI  
SSIEQKTSADGNEKKIEMVRAYREKIEKELEAVCQDVLSLLDNYLIKNCSETQYESKV FYLKMKGD  
YYRYLAEVATGEKRATV VESSEKAYSEAHEISKEHMRPTHPIRLGLALNYSVFY YEIQNAPEQACHL  
AKTAFDDAIAELDTLNEDSYKDSTLIMQLLRDNLTLWTSDQQDDDDGGEGNN

### Host

Mouse

### Reactivity

Human

Interspecies Antigen Sequence	Mouse (99); Rat (99)
Isotype	IgG2a Kappa
Quality Control Testing	Antibody Reactive Against Recombinant Protein. Western Blot detection against Immunogen (52.91 KDa) .
Storage Buffer	In 1x PBS, pH 7.4
Storage Instruction	Store at -20°C or lower. Aliquot to avoid repeated freezing and thawing.

## Applications

- Western Blot (Recombinant protein)

[Protocol Download](#)

- ELISA

- Immunofluorescence

Immunofluorescence of monoclonal antibody to YWHAG on HeLa cell . [antibody concentration 10 ug/ml]

## Gene Info — YWHAG

Entrez GeneID	<a href="#">7532</a>
GeneBank Accession#	<a href="#">BC020963</a>
Protein Accession#	<a href="#">AAH20963</a>
Gene Name	YWHAG
Gene Alias	14-3-3GAMMA
Gene Description	tyrosine 3-monooxygenase/tryptophan 5-monooxygenase activation protein, gamma polypeptide
Omim ID	<a href="#">605356</a>
Gene Ontology	<a href="#">Hyperlink</a>

**Gene Summary**

This gene product belongs to the 14-3-3 family of proteins which mediate signal transduction by binding to phosphoserine-containing proteins. This highly conserved protein family is found in both plants and mammals, and this protein is 100% identical to the rat ortholog. It is induced by growth factors in human vascular smooth muscle cells, and is also highly expressed in skeletal and heart muscles, suggesting an important role for this protein in muscle tissue. It has been shown to interact with RAF1 and protein kinase C, proteins involved in various signal transduction pathways. [provided by RefSeq]

**Other Designations**

14-3-3 gamma

**Pathway**

- [Cell cycle](#)
- [Neurotrophin signaling pathway](#)