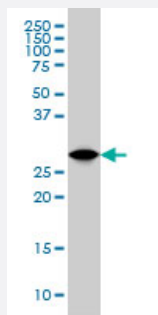


YWHAG monoclonal antibody (M02), clone 6A10

Catalog # H00007532-M02

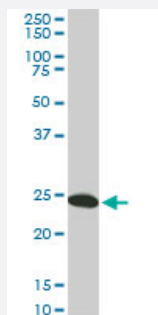
Size 100 ug

Applications



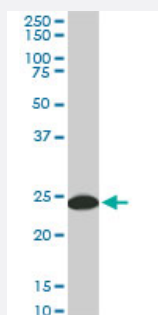
Western Blot (Cell lysate)

YWHAG monoclonal antibody (M02), clone 6A10 Western Blot analysis of YWHAG expression in K-562 (Cat # L009V1).



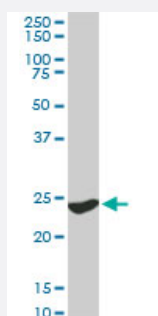
Western Blot (Cell lysate)

YWHAG monoclonal antibody (M02), clone 6A10. Western Blot analysis of YWHAG expression in NIH/3T3 (Cat # L018V1).



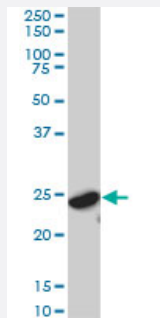
Western Blot (Cell lysate)

YWHAG monoclonal antibody (M02), clone 6A10. Western Blot analysis of YWHAG expression in Raw 264.7 (Cat # L024V1).



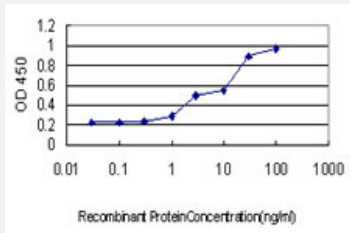
Western Blot (Cell lysate)

YWHAG monoclonal antibody (M02), clone 6A10. Western Blot analysis of YWHAG expression in PC-12 (Cat # L012V1).



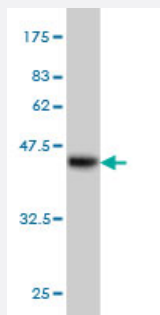
Western Blot (Cell lysate)

YWHAG monoclonal antibody (M02), clone 6A10. Western Blot analysis of YWHAG expression in IMR-32 (Cat # L008V1).



Sandwich ELISA (Recombinant protein)

Detection limit for recombinant GST tagged YWHAG is approximately 0.3ng/ml as a capture antibody.



Western Blot detection against Immunogen (36.74 KDa) .

Specification

Product Description	Mouse monoclonal antibody raised against a partial recombinant YWHAG.
Immunogen	YWHAG (NP_036611, 70 a.a. ~ 169 a.a) partial recombinant protein with GST tag. MW of the GST tag alone is 26 KDa.
Sequence	TSADGNEKKIEMVRAYREKIEKELEAVCQDVLSLLDNYLIKNCSETQYESKV FYLKMKG DYRYLA EVATGEKRATV VESSEKAYSEAHEISKEHMQPTH
Host	Mouse
Reactivity	Human, Mouse, Rat
Interspecies Antigen Sequence	Mouse (100); Rat (100)
Isotype	IgG2b Kappa

Quality Control Testing

Antibody Reactive Against Recombinant Protein.
Western Blot detection against Immunogen (36.74 KDa) .

Storage Buffer

In 1x PBS, pH 7.4

Storage Instruction

Store at -20°C or lower. Aliquot to avoid repeated freezing and thawing.

Applications

- Western Blot (Cell lysate)

YWHAG monoclonal antibody (M02), clone 6A10 Western Blot analysis of YWHAG expression in K-562 (Cat # L009V1).

[Protocol Download](#)

- Western Blot (Cell lysate)

YWHAG monoclonal antibody (M02), clone 6A10. Western Blot analysis of YWHAG expression in NIH/3T3 (Cat # L018V1).

[Protocol Download](#)

- Western Blot (Cell lysate)

YWHAG monoclonal antibody (M02), clone 6A10. Western Blot analysis of YWHAG expression in Raw 264.7 (Cat # L024V1).

[Protocol Download](#)

- Western Blot (Cell lysate)

YWHAG monoclonal antibody (M02), clone 6A10. Western Blot analysis of YWHAG expression in PC-12 (Cat # L012V1).

[Protocol Download](#)

- Western Blot (Cell lysate)

YWHAG monoclonal antibody (M02), clone 6A10. Western Blot analysis of YWHAG expression in IMR-32 (Cat # L008V1).

[Protocol Download](#)

- Western Blot (Recombinant protein)

[Protocol Download](#)

- Sandwich ELISA (Recombinant protein)

Detection limit for recombinant GST tagged YWHAG is approximately 0.3ng/ml as a capture antibody.

[Protocol Download](#)

- ELISA

Gene Info — YWHAG

Entrez GeneID [7532](#)**GeneBank Accession#** [NM_012479](#)**Protein Accession#** [NP_036611](#)**Gene Name** YWHAG**Gene Alias** 14-3-3GAMMA**Gene Description** tyrosine 3-monooxygenase/tryptophan 5-monooxygenase activation protein, gamma polypeptide**Omim ID** [605356](#)**Gene Ontology** [Hyperlink](#)

Gene Summary This gene product belongs to the 14-3-3 family of proteins which mediate signal transduction by binding to phosphoserine-containing proteins. This highly conserved protein family is found in both plants and mammals, and this protein is 100% identical to the rat ortholog. It is induced by growth factors in human vascular smooth muscle cells, and is also highly expressed in skeletal and heart muscles, suggesting an important role for this protein in muscle tissue. It has been shown to interact with RAF1 and protein kinase C, proteins involved in various signal transduction pathways. [provided by RefSeq]

Other Designations 14-3-3 gamma

Pathway

- [Cell cycle](#)
- [Neurotrophin signaling pathway](#)