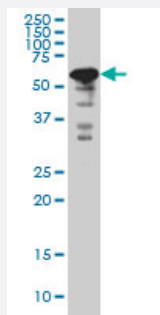


# YY1 monoclonal antibody (M04), clone 2C5

Catalog # H00007528-M04

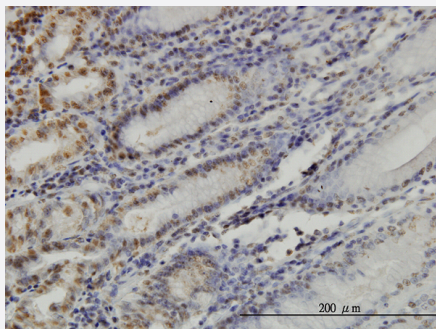
Size 100 ug

## Applications



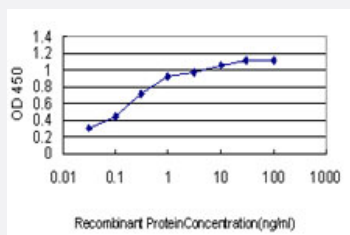
### Western Blot (Cell lysate)

YY1 monoclonal antibody (M04), clone 2C5 Western Blot analysis of YY1 expression in HeLa S3 NE ( Cat # L013V3 ).



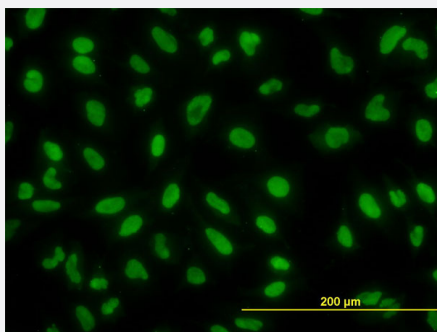
### Immunohistochemistry (Formalin/PFA-fixed paraffin-embedded sections)

Immunoperoxidase of monoclonal antibody to YY1 on formalin-fixed paraffin-embedded human stomach. [antibody concentration 7 ug/ml]



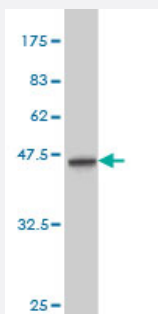
### Sandwich ELISA (Recombinant protein)

Detection limit for recombinant GST tagged YY1 is approximately 0.03ng/ml as a capture antibody.



## Immunofluorescence

Immunofluorescence of monoclonal antibody to YY1 on HeLa cell. [antibody concentration 10 ug/ml]



Western Blot detection against Immunogen (36.74 KDa) .

## Specification

<b>Product Description</b>	Mouse monoclonal antibody raised against a partial recombinant YY1.
<b>Immunogen</b>	YY1 (NP_003394, 221 a.a. ~ 320 a.a) partial recombinant protein with GST tag. MW of the GST tag alone is 26 KDa.
<b>Sequence</b>	VTMWSSDEKKDIDHETVVEEQIIGENSPPDYSEYMTGKKLPPGGIPGIDLSDPKQLAEFARMKPRK IKEDDAPRTIACPHKGCTKMFRDNSAMRKHLHHTH
<b>Host</b>	Mouse
<b>Reactivity</b>	Human
<b>Interspecies Antigen Sequence</b>	Mouse (100); Rat (100)
<b>Isotype</b>	IgG1 Kappa
<b>Quality Control Testing</b>	Antibody Reactive Against Recombinant Protein. Western Blot detection against Immunogen (36.74 KDa) .
<b>Storage Buffer</b>	In 1x PBS, pH 7.4
<b>Storage Instruction</b>	Store at -20°C or lower. Aliquot to avoid repeated freezing and thawing.

## Applications

- Western Blot (Cell lysate)

YY1 monoclonal antibody (M04), clone 2C5 Western Blot analysis of YY1 expression in Hela S3 NE ( Cat # L013V3 ).

[Protocol Download](#)

- Western Blot (Recombinant protein)

[Protocol Download](#)

- Immunohistochemistry (Formalin/PFA-fixed paraffin-embedded sections)

Immunoperoxidase of monoclonal antibody to YY1 on formalin-fixed paraffin-embedded human stomach. [antibody concentration 7 ug/ml]

[Protocol Download](#)

- Sandwich ELISA (Recombinant protein)

Detection limit for recombinant GST tagged YY1 is approximately 0.03ng/ml as a capture antibody.

[Protocol Download](#)

- ELISA

- Immunofluorescence

Immunofluorescence of monoclonal antibody to YY1 on HeLa cell. [antibody concentration 10 ug/ml]

## Gene Info — YY1

Entrez GeneID	<a href="#">7528</a>
---------------	----------------------

GeneBank Accession#	<a href="#">NM_003403</a>
---------------------	---------------------------

Protein Accession#	<a href="#">NP_003394</a>
--------------------	---------------------------

Gene Name	YY1
-----------	-----

Gene Alias	DELTA, INO80S, NF-E1, UCRBP, YIN-YANG-1
------------	---

Gene Description	YY1 transcription factor
------------------	--------------------------

Omim ID	<a href="#">600013</a>
---------	------------------------

## Gene Ontology

[Hyperlink](#)

## Gene Summary

YY1 is a ubiquitously distributed transcription factor belonging to the GLI-Kruppel class of zinc finger proteins. The protein is involved in repressing and activating a diverse number of promoters. YY1 may direct histone deacetylases and histone acetyltransferases to a promoter in order to activate or repress the promoter, thus implicating histone modification in the function of YY1. [provided by RefSeq]

## Other Designations

INO80 complex subunit S|Yin and Yang 1 protein

## Disease

- [Cardiovascular Diseases](#)
- [Diabetes Mellitus](#)
- [Edema](#)