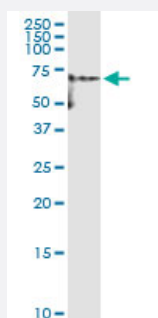


YES1 (Human) IP-WB Antibody Pair

Catalog # H00007525-PW1

Size 1 Set

Applications



Immunoprecipitation of YES1 transfected lysate using rabbit polyclonal anti-YES1 and Protein A Magnetic Bead ([U0007](#)), and immunoblotted with mouse polyclonal anti-YES1.

Specification

Product Description	This IP-WB antibody pair set comes with one antibody for immunoprecipitation and another to detect the precipitated protein in western blot.
Reactivity	Human
Interspecies Antigen Sequence	Mouse (95); Rat (94)
Quality Control Testing	Immunoprecipitation-Western Blot (IP-WB) Immunoprecipitation of YES1 transfected lysate using rabbit polyclonal anti-YES1 and Protein A Magnetic Bead (U0007), and immunoblotted with mouse polyclonal anti-YES1.
Supplied Product	Antibody pair set content: 1. Antibody pair for IP: rabbit polyclonal anti-YES1 (300 ul) 2. Antibody pair for WB: mouse polyclonal anti-YES1 (50 ul)
Storage Instruction	Store reagents of the antibody pair set at -20°C or lower. Please aliquot to avoid repeated freeze thaw cycle. Reagents should be returned to -20°C storage immediately after use.

Applications

- Immunoprecipitation-Western Blot

[Protocol Download](#)

Gene Info — YES1

Entrez GeneID [7525](#)

Gene Name YES1

Gene Alias HsT441, P61-YES, Yes, c-yes

Gene Description v-yes-1 Yamaguchi sarcoma viral oncogene homolog 1

Omim ID [164880](#)

Gene Ontology [Hyperlink](#)

Gene Summary This gene is the cellular homolog of the Yamaguchi sarcoma virus oncogene. The encoded protein has tyrosine kinase activity and belongs to the src family of proteins. This gene lies in close proximity to thymidylate synthase gene on chromosome 18, and a corresponding pseudogene has been found on chromosome 22. [provided by RefSeq]

Other Designations OTTHUMP00000162194|Yamaguchi sarcoma oncogene|cellular yes-1 protein|proto-oncogene tyrosine-protein kinase YES|viral oncogene yes-1 homolog 1

Pathway

- [Adherens junction](#)
- [Tight junction](#)

Disease

- [Celiac Disease](#)
- [Genetic Predisposition to Disease](#)
- [HIV Infections](#)