

DNAPAb

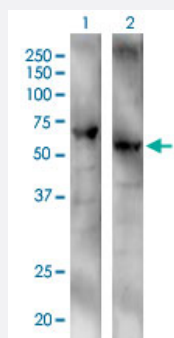
Hard-to-Find
Antibody

VIM DNAPAb

Catalog # H00007431-W03P

Size 100 ug

Applications



Western Blot (Transfected lysate)

Western Blot analysis of VIM expression in transfected 293T cell line by VIM DNAPAb polyclonal antibody.

Lane 1: VIM transfected lysate(23.32 KDa).

Lane 2: Non-transfected lysate.

Specification

Product Description	Rabbit polyclonal antibody raised against a partial-length human VIM DNA using DNAPAb™ Immune technology.
Technology	DNAPAb™ Immune
Immunogen	VIM (NP_003371.2, 207 a.a. ~ 226 a.a) partial-length human DNA
Sequence	RQDV DNASLARLDL ERKVES
Host	Rabbit
Reactivity	Human
Purification	Protein A
Quality Control Testing	Antibody reactive against mammalian transfected lysate.
Storage Buffer	In 1x PBS, pH 7.4
Storage Instruction	Store at -20°C or lower. Aliquot to avoid repeated freezing and thawing.

Applications

- Western Blot (Transfected lysate)

Western Blot analysis of VIM expression in transfected 293T cell line by VIM DNAXPab polyclonal antibody.

Lane 1: VIM transfected lysate(23.32 KDa).

Lane 2: Non-transfected lysate.

[Protocol Download](#)

- Immunofluorescence (Transfected cell)

- Flow Cytometry (Transfected cell)

Gene Info — VIM

Entrez GeneID [7431](#)

GeneBank Accession# [NM_003380.2](#)

Protein Accession# [NP_003371.2](#)

Gene Name VIM

Gene Alias FLJ36605

Gene Description vimentin

Omim ID [193060](#)

Gene Ontology [Hyperlink](#)

Gene Summary This gene encodes a member of the intermediate filament family. Intermediate filaments, along with microtubules and actin microfilaments, make up the cytoskeleton. The protein encoded by this gene is responsible for maintaining cell shape, integrity of the cytoplasm, and stabilizing cytoskeletal interactions. It is also involved in the immune response, and controls the transport of low-density lipoprotein (LDL)-derived cholesterol from a lysosome to the site of esterification. It functions as an organizer of a number of critical proteins involved in attachment, migration, and cell signaling. Mutations in this gene causes a dominant, pulverulent cataract

Other Designations OTTHUMP00000019224

Disease

- [Alzheimer disease](#)
- [Anorexia Nervosa](#)
- [Bulimia](#)
- [Cognition](#)
- [Genetic Predisposition to Disease](#)