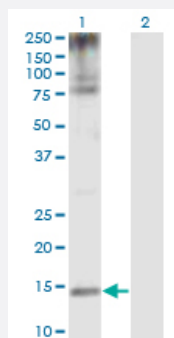


SUMO1 monoclonal antibody (M03), clone 3D7

Catalog # H00007341-M03

Size 100 ug

Applications

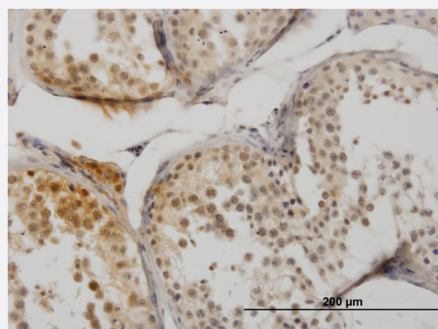


Western Blot (Transfected lysate)

Western Blot analysis of SUMO1 expression in transfected 293T cell line by SUMO1 monoclonal antibody (M03), clone 3D7.

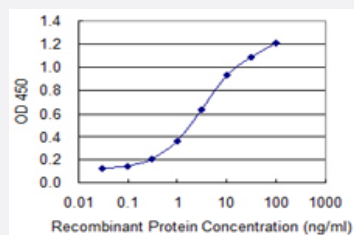
Lane 1: SUMO1 transfected lysate (Predicted MW: 11.6 KDa).

Lane 2: Non-transfected lysate.



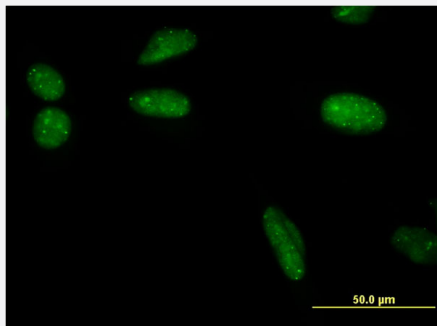
Immunohistochemistry (Formalin/PFA-fixed paraffin-embedded sections)

Immunoperoxidase of monoclonal antibody to SUMO1 on formalin-fixed paraffin-embedded human testis. [antibody concentration 3 ug/ml]



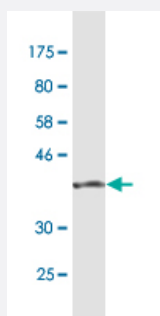
Sandwich ELISA (Recombinant protein)

Detection limit for recombinant GST tagged SUMO1 is 0.1 ng/ml as a capture antibody.



Immunofluorescence

Immunofluorescence of monoclonal antibody to SUMO1 on HeLa cell .
[antibody concentration 10 ug/ml]



Western Blot detection against Immunogen (38 KDa) .

Specification

Product Description	Mouse monoclonal antibody raised against a full-length recombinant SUMO1.
Immunogen	SUMO1 (NP_001005781.1, 1 a.a. ~ 101 a.a) full-length recombinant protein with GST tag. MW of the GST tag alone is 26 KDa.
Sequence	MSDQEAKPSTEDLGDKKEGEYIKLVIGQDSSEIHFVKVMTTHLKKLKESYCQRQGVPMNSLRFL FEGQRIADNHTPKELGMEEEDVIEVYQEQTGGHSTV
Host	Mouse
Reactivity	Human
Isotype	IgG2a Kappa
Quality Control Testing	Antibody Reactive Against Recombinant Protein. Western Blot detection against Immunogen (38 KDa) .
Storage Buffer	In 1x PBS, pH 7.4
Storage Instruction	Store at -20°C or lower. Aliquot to avoid repeated freezing and thawing.

Applications

- Western Blot (Transfected lysate)

Western Blot analysis of SUMO1 expression in transfected 293T cell line by SUMO1 monoclonal antibody (M03), clone 3D7.

Lane 1: SUMO1 transfected lysate (Predicted MW: 11.6 KDa).

Lane 2: Non-transfected lysate.

[Protocol Download](#)

- Western Blot (Recombinant protein)

[Protocol Download](#)

- Immunohistochemistry (Formalin/PFA-fixed paraffin-embedded sections)

Immunoperoxidase of monoclonal antibody to SUMO1 on formalin-fixed paraffin-embedded human testis. [antibody concentration 3 ug/ml]

[Protocol Download](#)

- Sandwich ELISA (Recombinant protein)

Detection limit for recombinant GST tagged SUMO1 is 0.1 ng/ml as a capture antibody.

[Protocol Download](#)

- ELISA

- Immunofluorescence

Immunofluorescence of monoclonal antibody to SUMO1 on HeLa cell . [antibody concentration 10 ug/ml]

Gene Info — SUMO1

Entrez GeneID [7341](#)

GeneBank Accession# [NM_001005781.1](#)

Protein Accession# [NP_001005781.1](#)

Gene Name SUMO1

Gene Alias DAP-1, GMP1, OFC10, PIC1, SENP2, SMT3, SMT3C, SMT3H3, SUMO-1, UBL1

Gene Description SMT3 suppressor of mif two 3 homolog 1 (S. cerevisiae)

Omim ID [601912](#)

Gene Ontology [Hyperlink](#)

Gene Summary

This gene encodes a protein that is a member of the SUMO (small ubiquitin-like modifier) protein family. It functions in a manner similar to ubiquitin in that it is bound to target proteins as part of a post-translational modification system. However, unlike ubiquitin which targets proteins for degradation, this protein is involved in a variety of cellular processes, such as nuclear transport, transcriptional regulation, apoptosis, and protein stability. It is not active until the last four amino acids of the carboxy-terminus have been cleaved off. Several pseudogenes have been reported for this gene. Alternate transcriptional splice variants encoding different isoforms have been characterized. [provided by RefSeq]

Other Designations

GAP modifying protein 1|SMT3 suppressor of mif two 3 homolog 1|sentrin|ubiquitin-like 1 (sentrin)

Disease

- [Carcinoma](#)
- [Cardiovascular Diseases](#)
- [Cleft Lip](#)
- [Cleft Palate](#)
- [Diabetes Mellitus](#)
- [Edema](#)
- [Genetic Predisposition to Disease](#)
- [Lung Neoplasms](#)
- [Tooth Abnormalities](#)