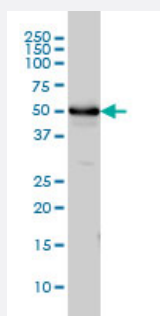


# TUBA1 monoclonal antibody (M01), clone 2E11

Catalog # H00007277-M01

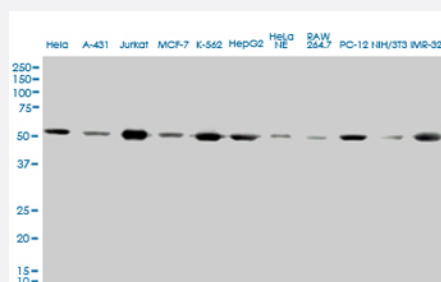
Size 100 ug

## Applications



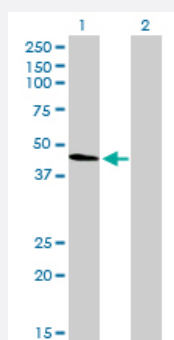
### Western Blot (Cell lysate)

TUBA1 monoclonal antibody (M01), clone 2E11. Western Blot analysis of TUBA1 expression in HeLa.



### Western Blot (Cell lysate)

TUBA1 monoclonal antibody (M01), clone 2E11. Western Blot analysis of TUBA1 expression in different Cell lines and Human Tissue.

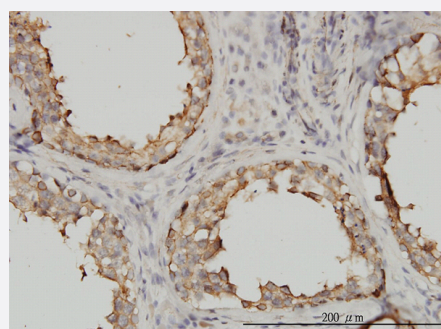


### Western Blot (Transfected lysate)

Western Blot analysis of TUBA1 expression in transfected 293T cell line by TUBA1 monoclonal antibody (M01), clone 2E11.

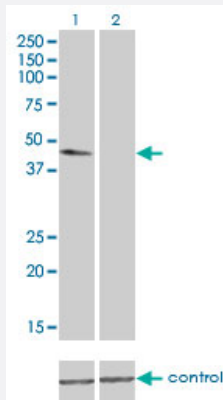
Lane 1: TUBA1 transfected lysate(49.9 KDa).

Lane 2: Non-transfected lysate.



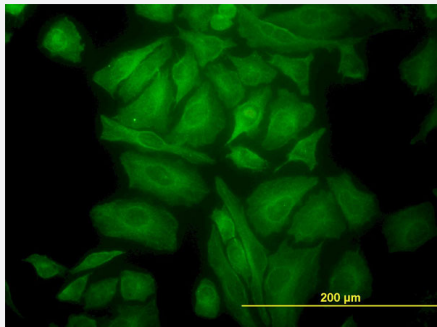
### Immunohistochemistry (Formalin/PFA-fixed paraffin-embedded sections)

Immunoperoxidase of monoclonal antibody to TUBA1 on formalin-fixed paraffin-embedded human testis. [antibody concentration 3 ug/ml]



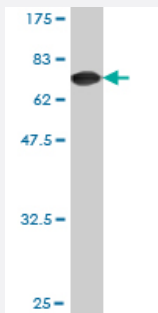
### RNAi Knockdown (Antibody validated)

Western blot analysis of TUBA1 over-expressed 293 cell line, cotransfected with TUBA1 Validated Chimera RNAi ( Cat # H00007277-R01V ) (Lane 2) or non-transfected control (Lane 1). Blot probed with TUBA1 monoclonal antibody (M01), clone 2E11 (Cat # H00007277-M01 ). GAPDH ( 36.1 kDa ) used as specificity and loading control.



### Immunofluorescence

Immunofluorescence of monoclonal antibody to TUBA1 on HeLa cell. [antibody concentration 10 ug/ml]



Western Blot detection against Immunogen (75.02 KDa) .

## Specification

### Product Description

Mouse monoclonal antibody raised against a full length recombinant TUBA1.

### Immunogen

TUBA1 (AAH09238, 1 a.a. ~ 448 a.a) full-length recombinant protein with GST tag. MW of the GST tag alone is 26 KDa.

### Sequence

MRECISVHVGQAGVQMGNACWELCYLEHGIQPDGQMPSDKTIGGGDDSFSTFFCETGAGKHVP  
RAVFDLEPTVIDEIRNGPYRQLFHPEQLITGKEDAANNYARGHYTIGKEIIDPVLDRIRKLSAQCTGL  
QGFLVFHSFGGGTSGGFTSLLMERLSVDYGKSKLEFSIYPAPQVSTAVVEPYNSILTTHTTLEHS  
DCAFMDNEAAYDICRRNLDIERPTYTNLNRSLISQVSSITASLRFDGALNVDLTEFQTNLVPYPRHF  
PLATYAPVISA EKAYHEQLSVAEITNACFEPANQMVKCDPRHGKYMACECLLYRGDVVPKDVNAAI  
AAIKTKRSIQFVDWCPTGFKVGINYPPTVVPGGDLAKVQRAVCMLSNTTAAEAWARLDHKFDL  
MYAKRAVFHWYVGEEMEEGEFSEAREDMAALEKDYEVEVGIDSYEDEDEGEE

### Host

Mouse

<b>Reactivity</b>	Human
<b>Isotype</b>	IgG2b kappa
<b>Quality Control Testing</b>	Antibody Reactive Against Recombinant Protein. Western Blot detection against Immunogen (75.02 KDa) .
<b>Storage Buffer</b>	In 1x PBS, pH 7.4
<b>Storage Instruction</b>	Store at -20°C or lower. Aliquot to avoid repeated freezing and thawing.

## Applications

- Western Blot (Cell lysate)

TUBA1 monoclonal antibody (M01), clone 2E11. Western Blot analysis of TUBA1 expression in HeLa.

[Protocol Download](#)

- Western Blot (Cell lysate)

TUBA1 monoclonal antibody (M01), clone 2E11. Western Blot analysis of TUBA1 expression in different Cell lines and Human Tissue.

[Protocol Download](#)

- Western Blot (Transfected lysate)

Western Blot analysis of TUBA1 expression in transfected 293T cell line by TUBA1 monoclonal antibody (M01), clone 2E11.

Lane 1: TUBA1 transfected lysate(49.9 KDa).

Lane 2: Non-transfected lysate.

[Protocol Download](#)

- Western Blot (Recombinant protein)

[Protocol Download](#)

- Immunohistochemistry (Formalin/PFA-fixed paraffin-embedded sections)

Immunoperoxidase of monoclonal antibody to TUBA1 on formalin-fixed paraffin-embedded human testis. [antibody concentration 3 ug/ml]

[Protocol Download](#)

- ELISA

- RNAi Knockdown (Antibody validated)

Western blot analysis of TUBA1 over-expressed 293 cell line, cotransfected with TUBA1 Validated Chimera RNAi ( Cat # H00007277-R01V ) (Lane 2) or non-transfected control (Lane 1). Blot probed with TUBA1 monoclonal antibody (M01), clone 2E11 (Cat # H00007277-M01 ). GAPDH ( 36.1 kDa ) used as specificity and loading control.

[Protocol Download](#)

- Immunofluorescence

Immunofluorescence of monoclonal antibody to TUBA1 on HeLa cell. [antibody concentration 10 ug/ml]

[Protocol Download](#)

## Gene Info — TUBA4A

Entrez GeneID [7277](#)

GeneBank Accession# [BC009238](#)

Protein Accession# [AAH09238](#)

Gene Name TUBA4A

Gene Alias FLJ30169, H2-ALPHA, TUBA1

Gene Description tubulin, alpha 4a

Omim ID [191110](#)

Gene Ontology [Hyperlink](#)

### Gene Summary

Microtubules of the eukaryotic cytoskeleton perform essential and diverse functions and are composed of a heterodimer of alpha and beta tubulin. The genes encoding these microtubule constituents are part of the tubulin superfamily, which is composed of six distinct families. Genes from the alpha, beta and gamma tubulin families are found in all eukaryotes. The alpha and beta tubulins represent the major components of microtubules, while gamma tubulin plays a critical role in the nucleation of microtubule assembly. There are multiple alpha and beta tubulin genes and they are highly conserved among and between species. This gene encodes an alpha tubulin that is a highly conserved homolog of a rat testis-specific alpha tubulin. [provided by RefSeq]

Other Designations tubulin alpha-1 chain|tubulin, alpha 1 (testis specific)

## Pathway

- [Gap junction](#)
- [Pathogenic Escherichia coli infection - EHEC](#)

## Disease

- [Diabetes Mellitus](#)