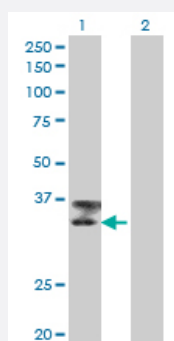


TTN monoclonal antibody (M09), clone 6H5

Catalog # H00007273-M09

Size 100 ug

Applications

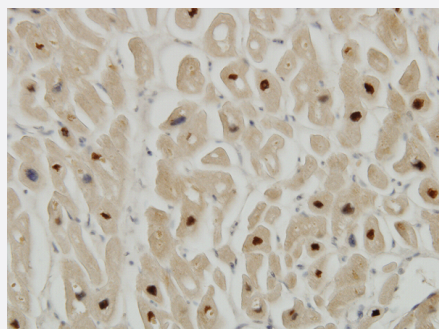


Western Blot (Transfected lysate)

Western Blot analysis of TTN expression in transfected 293T cell line by TTN monoclonal antibody (M09), clone 6H5.

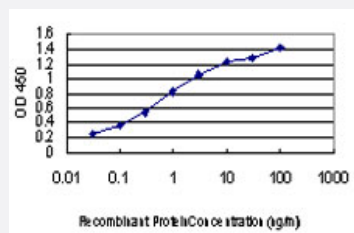
Lane 1: TTN transfected lysate(32.8 KDa).

Lane 2: Non-transfected lysate.



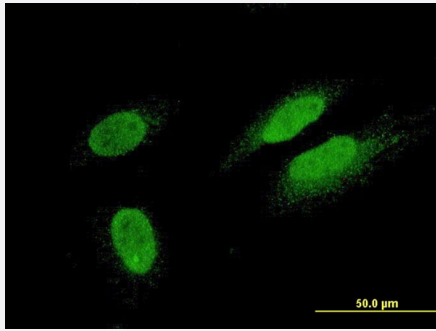
Immunohistochemistry (Formalin/PFA-fixed paraffin-embedded sections)

Immunoperoxidase of monoclonal antibody to TTN on formalin-fixed paraffin-embedded human heart. [antibody concentration 3 ug/ml]



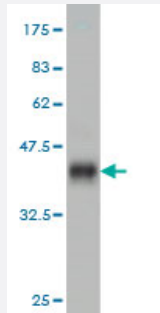
Sandwich ELISA (Recombinant protein)

Detection limit for recombinant GST tagged TTN is approximately 0.03ng/ml as a capture antibody.



Immunofluorescence

Immunofluorescence of monoclonal antibody to TTN on HeLa cell . [antibody concentration 10 ug/ml]



Western Blot detection against Immunogen (37.84 KDa) .

Specification

| | |
|--------------------------------------|--|
| Product Description | Mouse monoclonal antibody raised against a partial recombinant TTN. |
| Immunogen | TTN (AAH58824, 1 a.a. ~ 110 a.a) partial recombinant protein with GST tag. MW of the GST tag alone is 26 KDa. |
| Sequence | MTTQAPTFTQPLQSVVVLEGSTATFEAHISGFVPVPEVSWFRDGGQVISTSTLPGVQISFSDGRAKLTI PAVTKANSGRYSLKATNGSGQATSTAELLVKAETAPPNFVQRL |
| Host | Mouse |
| Reactivity | Human |
| Interspecies Antigen Sequence | Mouse (93) |
| Isotype | IgG2a Kappa |
| Quality Control Testing | Antibody Reactive Against Recombinant Protein. Western Blot detection against Immunogen (37.84 KDa) . |
| Storage Buffer | In 1x PBS, pH 7.4 |
| Storage Instruction | Store at -20°C or lower. Aliquot to avoid repeated freezing and thawing. |

Applications

- Western Blot (Transfected lysate)

Western Blot analysis of TTN expression in transfected 293T cell line by TTN monoclonal antibody (M09), clone 6H5.

Lane 1: TTN transfected lysate(32.8 KDa).

Lane 2: Non-transfected lysate.

[Protocol Download](#)

- Western Blot (Recombinant protein)

[Protocol Download](#)

- Immunohistochemistry (Formalin/PFA-fixed paraffin-embedded sections)

Immunoperoxidase of monoclonal antibody to TTN on formalin-fixed paraffin-embedded human heart. [antibody concentration 3 ug/ml]

[Protocol Download](#)

- Sandwich ELISA (Recombinant protein)

Detection limit for recombinant GST tagged TTN is approximately 0.03ng/ml as a capture antibody.

[Protocol Download](#)

- ELISA

- Immunofluorescence

Immunofluorescence of monoclonal antibody to TTN on HeLa cell . [antibody concentration 10 ug/ml]

Gene Info — TTN

| | |
|---------------------|--|
| Entrez GeneID | 7273 |
| GeneBank Accession# | BC058824 |
| Protein Accession# | AAH58824 |
| Gene Name | TTN |
| Gene Alias | CMD1G, CMH9, CMPD4, CONNECTIN, DKFZp451N061, EOMFC, FLJ26020, FLJ26409, FLJ32040, FLJ34413, FLJ39564, FLJ43066, HMERF, LGMD2J, TMD |

| | |
|--------------------|--|
| Gene Description | titin |
| Omim ID | 188840 600334 603689 604145 608807 |
| Gene Ontology | Hyperlink |
| Gene Summary | <p>This gene encodes a large abundant protein of striated muscle. The product of this gene is divided into two regions, a N-terminal I-band and a C-terminal A-band. The I-band, which is the elastic part of the molecule, contains two regions of tandem immunoglobulin domains on either side of a P EVK region that is rich in proline, glutamate, valine and lysine. The A-band, which is thought to act as a protein-ruler, contains a mixture of immunoglobulin and fibronectin repeats, and possesses kinase activity. A N-terminal Z-disc region and a C-terminal M-line region bind to the Z-line and M-line of the sarcomere respectively so that a single titin molecule spans half the length of a sarcomere. Titin also contains binding sites for muscle associated proteins so it serves as an adhesion template for the assembly of contractile machinery in muscle cells. It has also been identified as a structural protein for chromosomes. Considerable variability exists in the I-band, the M-line and the Z-disc regions of titin. Variability in the I-band region contributes to the differences in elasticity of different titin isoforms and, therefore, to the differences in elasticity of different muscle types. Of the many titin variants identified, five for which complete transcript information is available are described. Mutations in this gene are associated with familial hypertrophic cardiomyopathy 9 and autoantibodies to titin are produced in patients with the autoimmune disease scleroderma. [provided by RefSeq]</p> |
| Other Designations | rhabdomyosarcoma antigen MU-RMS-40.14 |

Publication Reference

- [Preserved single muscle fiber specific force in facioscapulohumeral muscular dystrophy.](#)

Lassche S, Voermans NC, van der Pijl R, van den Berg M, Heerschap A, van Hees H, Kusters B, van der Maarel SM, Ottenheijm CAC, van Engelen BGM.

Neurology 2020 Mar; 94(11):e1157.

Application: WB-Ti, Human, Human muscle biopsies

Pathway

- [Hypertrophic cardiomyopathy \(HCM\)](#)

Disease

- [Cardiomyopathy](#)
- [Cardiovascular Diseases](#)

- [Diabetes Mellitus](#)
- [Disease](#)
- [Edema](#)
- [Genetic Predisposition to Disease](#)