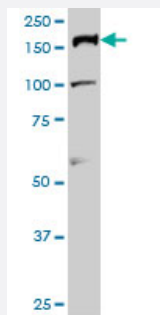


TOP2A monoclonal antibody (M01), clone 1E2

Catalog # H00007153-M01

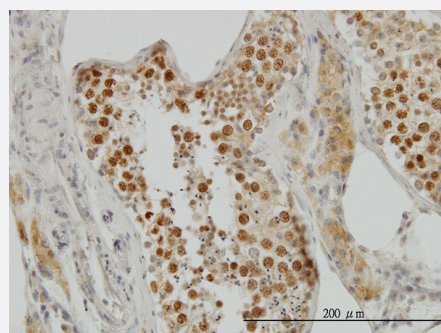
Size 100 ug

Applications



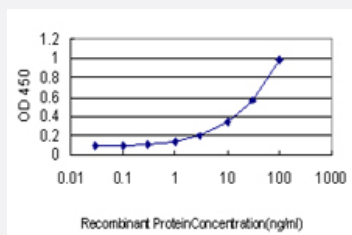
Western Blot (Cell lysate)

TOP2A monoclonal antibody (M01), clone 1E2 Western Blot analysis of TOP2A expression in HeLa S3 NE (Cat # L013V3).



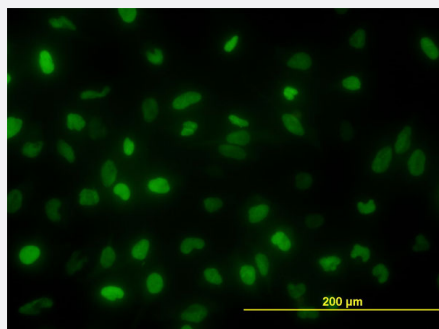
Immunohistochemistry (Formalin/PFA-fixed paraffin-embedded sections)

Immunoperoxidase of monoclonal antibody to TOP2A on formalin-fixed paraffin-embedded human testis. [antibody concentration 3 ug/ml]



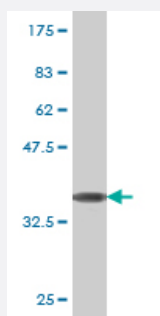
Sandwich ELISA (Recombinant protein)

Detection limit for recombinant GST tagged TOP2A is approximately 0.3ng/ml as a capture antibody.



Immunofluorescence

Immunofluorescence of monoclonal antibody to TOP2A on HeLa cell. [antibody concentration 10 ug/ml]



Western Blot detection against Immunogen (36.41 KDa) .

Specification

Product Description	Mouse monoclonal antibody raised against a partial recombinant TOP2A.
Immunogen	TOP2A (NP_001058, 1435 a.a. ~ 1531 a.a) partial recombinant protein with GST tag. MW of the GST tag alone is 26 KDa.
Sequence	RAAPKGTGRDPALNSGVSQKPDPAKTKNRRKRKPSTSDSDSNFEKIVSKAVTSKKSKGESDD FHMDFDSAVAPRAKSVRAKKPIKYLEESDEDDL
Host	Mouse
Reactivity	Human
Interspecies Antigen Sequence	Mouse (68); Rat (71)
Isotype	IgG1 Kappa
Quality Control Testing	Antibody Reactive Against Recombinant Protein. Western Blot detection against Immunogen (36.41 KDa) .
Storage Buffer	In 1x PBS, pH 7.4
Storage Instruction	Store at -20°C or lower. Aliquot to avoid repeated freezing and thawing.

Applications

- Western Blot (Cell lysate)

TOP2A monoclonal antibody (M01), clone 1E2 Western Blot analysis of TOP2A expression in Hela S3 NE (Cat # L013V3).

[Protocol Download](#)

- Western Blot (Recombinant protein)

[Protocol Download](#)

- Immunohistochemistry (Formalin/PFA-fixed paraffin-embedded sections)

Immunoperoxidase of monoclonal antibody to TOP2A on formalin-fixed paraffin-embedded human testis. [antibody concentration 3 ug/ml]

[Protocol Download](#)

- Sandwich ELISA (Recombinant protein)

Detection limit for recombinant GST tagged TOP2A is approximately 0.3ng/ml as a capture antibody.

[Protocol Download](#)

- ELISA

- Immunofluorescence

Immunofluorescence of monoclonal antibody to TOP2A on HeLa cell. [antibody concentration 10 ug/ml]

Gene Info — TOP2A

Entrez GeneID [7153](#)

GeneBank Accession# [NM_001067](#)

Protein Accession# [NP_001058](#)

Gene Name TOP2A

Gene Alias TOP2, TP2A

Gene Description topoisomerase (DNA) II alpha 170kDa

Omim ID [126430](#)

Gene Ontology

[Hyperlink](#)

Gene Summary

This gene encodes a DNA topoisomerase, an enzyme that controls and alters the topologic state of DNA during transcription. This nuclear enzyme is involved in processes such as chromosome condensation, chromatid separation, and the relief of torsional stress that occurs during DNA transcription and replication. It catalyzes the transient breaking and rejoining of two strands of duplex DNA which allows the strands to pass through one another, thus altering the topology of DNA. Two forms of this enzyme exist as likely products of a gene duplication event. The gene encoding this form, alpha, is localized to chromosome 17 and the beta gene is localized to chromosome 3. The gene encoding this enzyme functions as the target for several anticancer agents and a variety of mutations in this gene have been associated with the development of drug resistance. Reduced activity of this enzyme may also play a role in ataxia-telangiectasia. [provided by RefSeq]

Other Designations

DNA topoisomerase II, 170 kD|DNA topoisomerase II, alpha isozyme|topoisomerase (DNA) II alpha (170kD)

Publication Reference

- [Chromosome Scaffold is a Double-Stranded Assembly of Scaffold Proteins.](#)

Poonperm R, Takata H, Hamano T, Matsuda A, Uchiyama S, Hiraoka Y, Fukui K.

Scientific Reports 2015 Jul; 5:11916.

Application: IF, Human, HeLa cells

Disease

- [Breast cancer](#)
- [Breast Neoplasms](#)
- [Genetic Predisposition to Disease](#)
- [Leukemia](#)
- [Lymphatic Metastasis](#)
- [Lymphoma](#)
- [Recurrence](#)
- [Stomach Neoplasms](#)