

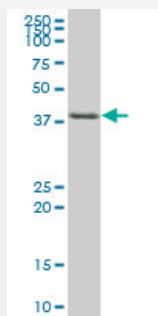
MaxPab®

TIA1 purified MaxPab mouse polyclonal antibody (B01P)

Catalog # H00007072-B01P

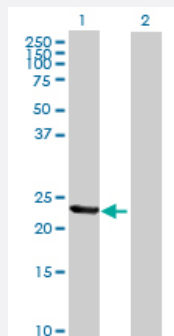
Size 50 ug

Applications



Western Blot (Tissue lysate)

TIA1 MaxPab polyclonal antibody. Western Blot analysis of TIA1 expression in human liver.



Western Blot (Transfected lysate)

Western Blot analysis of TIA1 expression in transfected 293T cell line ([H00007072-T01](#)) by TIA1 MaxPab polyclonal antibody.

Lane 1: TIA1 transfected lysate(23.54 KDa).

Lane 2: Non-transfected lysate.

Specification

Product Description	Mouse polyclonal antibody raised against a full-length human TIA1 protein.
Immunogen	TIA1 (AAH15944.1, 1 a.a. ~ 214 a.a) full-length human protein.
Sequence	MEDEMPKTLTVGNLSRDVTEALILQLFSQIGPCKNCKMIMDTAGNDPYCFVEFHEHRHAAAALAA MNGRKIMGKEVKVNWATTPSSQKKDTSSSTVVSTQRSQDHFHVFVGDLSPEITTEDIKAAFAPFG RISDARVVKDMATGKSKGYGFVSFFNKWDAENAIQQMGGQWLGGQRQRTNWATRKPPAPKSTY ECRCIGEEKEMWNFGEKYARF
Host	Mouse
Reactivity	Human

Quality Control Testing	Antibody reactive against mammalian transfected lysate.
Storage Buffer	In 1x PBS, pH 7.4
Storage Instruction	Store at -20°C or lower. Aliquot to avoid repeated freezing and thawing.

Applications

- Western Blot (Tissue lysate)

TIA1 MaxPab polyclonal antibody. Western Blot analysis of TIA1 expression in human liver.

[Protocol Download](#)

- Western Blot (Transfected lysate)

Western Blot analysis of TIA1 expression in transfected 293T cell line ([H00007072-T01](#)) by TIA1 MaxPab polyclonal antibody.

Lane 1: TIA1 transfected lysate(23.54 KDa).

Lane 2: Non-transfected lysate.

[Protocol Download](#)

Gene Info — TIA1

Entrez GeneID	7072
GeneBank Accession#	BC015944
Protein Accession#	AAH15944.1
Gene Name	TIA1
Gene Alias	-
Gene Description	TIA1 cytotoxic granule-associated RNA binding protein
Omim ID	603518
Gene Ontology	Hyperlink

Gene Summary	The product encoded by this gene is a member of a RNA-binding protein family and possesses nucleolytic activity against cytotoxic lymphocyte (CTL) target cells. It has been suggested that this protein may be involved in the induction of apoptosis as it preferentially recognizes poly(A) homopolymers and induces DNA fragmentation in CTL targets. The major granule-associated species is a 15-kDa protein that is thought to be derived from the carboxyl terminus of the 40-kDa product by proteolytic processing. Alternative splicing resulting in different isoforms of this gene product has been described in the literature. [provided by RefSeq]
--------------	---

Other Designations

T-cell-restricted intracellular antigen-1|TIA1 cytotoxic granule-associated RNA-binding protein|TIA 1 protein|cytotoxic granule-associated RNA-binding protein|nucleolysin TIA-1 isoform p40|p40-TIA-1 (containing p15-TIA-1)
