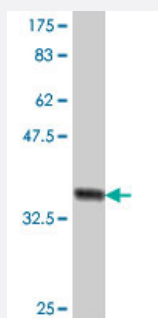


# TEAD3 polyclonal antibody (A01)

Catalog # H00007005-A01

Size 50 uL

## Applications



Western Blot detection against Immunogen (35.79 KDa) .

## Specification

<b>Product Description</b>	Mouse polyclonal antibody raised against a partial recombinant TEAD3.
<b>Immunogen</b>	TEAD3 (NP_003205, 215 a.a. ~ 302 a.a) partial recombinant protein with GST tag.
<b>Sequence</b>	WQDRTIASSRLRLLEYS AFMEVQRDPDTYSKHLFVHIGQTNP AFSDPPLEAVDVRQIYDKFPEKK GGLKELYEKGPPNAFFLVKFWAD
<b>Host</b>	Mouse
<b>Reactivity</b>	Human
<b>Interspecies Antigen Sequence</b>	Mouse (100); Rat (100)
<b>Quality Control Testing</b>	Antibody Reactive Against Recombinant Protein. Western Blot detection against Immunogen (35.79 KDa) .
<b>Storage Buffer</b>	50 % glycerol
<b>Storage Instruction</b>	Store at -20°C or lower. Aliquot to avoid repeated freezing and thawing.

## Applications

- Western Blot (Recombinant protein)

[Protocol Download](#)

- ELISA

## Gene Info — TEAD3

Entrez GeneID [7005](#)

GeneBank Accession# [NM\\_003214](#)

Protein Accession# [NP\\_003205](#)

Gene Name TEAD3

Gene Alias DTEF-1, ETFR-1, TEAD5, TEF-5, TEF5

Gene Description TEA domain family member 3

Omim ID [603170](#)

Gene Ontology [Hyperlink](#)

**Gene Summary** This gene product is a member of the transcriptional enhancer factor (TEF) family of transcription factors, which contain the TEA/ATTS DNA-binding domain. It is predominantly expressed in the placenta and is involved in the transactivation of the chorionic somatomammotropin-B gene enhancer. Translation of this protein is initiated at a non-AUG (AUA) start codon. [provided by RefSeq]

**Other Designations** OTTHUMP00000039597|TEA domain family member 5|Transcriptional enhancer factor TEF-5 (DTEF-1)|transcriptional enhancer factor 5

## Publication Reference

- [Transcription enhancer factor 3 \(TEF3\) mediates the expression of Down syndrome candidate region 1 isoform 1 \(DSCR1-1L\) in endothelial cells.](#)

Liu X, Zhao D, Qin L, Li J, Zeng H.

The Journal of Biological Chemistry 2008 Oct; 283(49):34159.

Application: Func, WB-Tr, Human, HUVEC