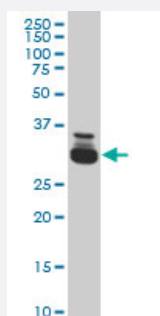


# TAF11 monoclonal antibody (M03), clone 3H5

Catalog # H00006882-M03

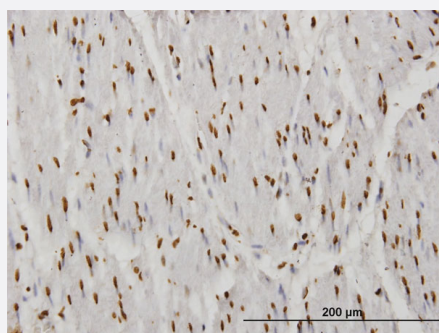
Size 100 ug

## Applications



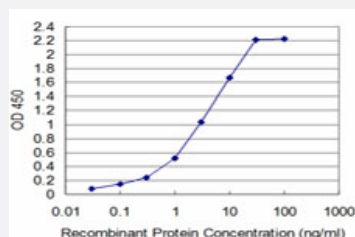
### Western Blot (Cell lysate)

TAF11 monoclonal antibody (M03), clone 3H5 Western Blot analysis of TAF11 expression in HeLa S3 NE (Cat # L013V3).



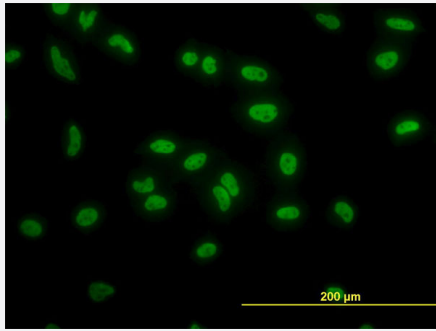
### Immunohistochemistry (Formalin/PFA-fixed paraffin-embedded sections)

Immunoperoxidase of monoclonal antibody to TAF11 on formalin-fixed paraffin-embedded human smooth muscle. [antibody concentration 1.2 ug/ml]



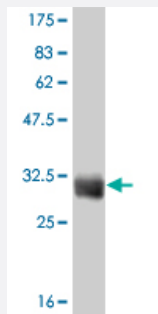
### Sandwich ELISA (Recombinant protein)

Detection limit for recombinant GST tagged TAF11 is approximately 0.1ng/ml as a capture antibody.



## Immunofluorescence

Immunofluorescence of monoclonal antibody to TAF11 on HeLa cell. [antibody concentration 10 ug/ml]



Western Blot detection against Immunogen (31.46 KDa) .

## Specification

<b>Product Description</b>	Mouse monoclonal antibody raised against a partial recombinant TAF11.
<b>Immunogen</b>	TAF11 (NP_005634, 158 a.a. ~ 210 a.a) partial recombinant protein with GST tag. MW of the GST tag alone is 26 KDa.
<b>Sequence</b>	SKVFVGEVVEEALDVCEKWGEMPPQLQPKHMREAVRRLKSKGQIPNSKHKKIIF
<b>Host</b>	Mouse
<b>Reactivity</b>	Human
<b>Isotype</b>	IgG1 Kappa
<b>Quality Control Testing</b>	Antibody Reactive Against Recombinant Protein. Western Blot detection against Immunogen (31.46 KDa) .
<b>Storage Buffer</b>	In 1x PBS, pH 7.4
<b>Storage Instruction</b>	Store at -20°C or lower. Aliquot to avoid repeated freezing and thawing.

## Applications

- Western Blot (Cell lysate)

TAF11 monoclonal antibody (M03), clone 3H5 Western Blot analysis of TAF11 expression in Hela S3 NE ( Cat # L013V3 ).

[Protocol Download](#)

- Western Blot (Recombinant protein)

[Protocol Download](#)

- Immunohistochemistry (Formalin/PFA-fixed paraffin-embedded sections)

Immunoperoxidase of monoclonal antibody to TAF11 on formalin-fixed paraffin-embedded human smooth muscle. [antibody concentration 1.2 ug/ml]

[Protocol Download](#)

- Sandwich ELISA (Recombinant protein)

Detection limit for recombinant GST tagged TAF11 is approximately 0.1ng/ml as a capture antibody.

[Protocol Download](#)

- ELISA

- Immunofluorescence

Immunofluorescence of monoclonal antibody to TAF11 on HeLa cell. [antibody concentration 10 ug/ml]

## Gene Info — TAF11

Entrez GeneID	<a href="#">6882</a>
---------------	----------------------

GeneBank Accession#	<a href="#">NM_005643</a>
---------------------	---------------------------

Protein Accession#	<a href="#">NP_005634</a>
--------------------	---------------------------

Gene Name	TAF11
-----------	-------

Gene Alias	MGC:15243, PRO2134, TAF2I, TAFII28
------------	------------------------------------

Gene Description	TAF11 RNA polymerase II, TATA box binding protein (TBP)-associated factor, 28kDa
------------------	--

Omim ID	<a href="#">600772</a>
---------	------------------------

Gene Ontology	<a href="#">Hyperlink</a>
---------------	---------------------------

**Gene Summary**

Initiation of transcription by RNA polymerase II requires the activities of more than 70 polypeptides. The protein that coordinates these activities is transcription factor IID (TFIID), which binds to the core promoter to position the polymerase properly, serves as the scaffold for assembly of the remainder of the transcription complex, and acts as a channel for regulatory signals. TFIID is composed of the TATA-binding protein (TBP) and a group of evolutionarily conserved proteins known as TBP-associated factors or TAFs. TAFs may participate in basal transcription, serve as coactivators, function in promoter recognition or modify general transcription factors (GTFs) to facilitate complex assembly and transcription initiation. This gene encodes a small subunit of TFIID that is present in all TFIID complexes and interacts with TBP. This subunit also interacts with another small subunit, TAF13, to form a heterodimer with a structure similar to the histone core structure. [provided by RefSeq]

**Other Designations**

OTTHUMP00000016241|TAF11 RNA polymerase II, TATA box binding protein (TBP)-associated factor, 28 kD|TATA box binding protein (TBP)-associated factor, RNA polymerase II, I, 28kD|TBP-associated factor 11|TFIID subunit p30-beta|transcription initiation facto

**Pathway**

- [Basal transcription factors](#)

**Disease**

- [Kidney Failure](#)