

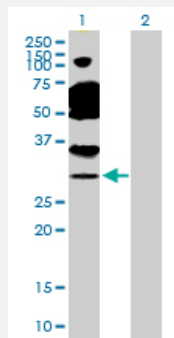
MaxPab®

TAF11 purified MaxPab rabbit polyclonal antibody (D01P)

Catalog # H00006882-D01P

Size 100 ug

Applications



Western Blot (Transfected lysate)

Western Blot analysis of TAF11 expression in transfected 293T cell line ([H00006882-T02](#)) by TAF11 MaxPab polyclonal antibody.

Lane 1: TAF11 transfected lysate(23.30 KDa).

Lane 2: Non-transfected lysate.

Specification

Product Description	Rabbit polyclonal antibody raised against a full-length human TAF11 protein.
Immunogen	TAF11 (NP_005634.1, 1 a.a. ~ 211 a.a) full-length human protein.
Sequence	MDDAHESPSDKGGETGESDETAAVPGDPGATD TDGIPEETDGDADVDLKEAAAEERGELESQD VSDLTTVEREDSSLLNPAAKKLKIDTKEKKEKKQKVDEDEIQKMQLVSSFSEEQLNRYEMYRRSA FPKAAIKRLIQSITGTSVSQNVVIAMSGISKVFVGEVVEEALDVCEKWGEM PPLQPKHMR EAVRRL KSKGQIPNSKHKKIIF
Host	Rabbit
Reactivity	Human
Quality Control Testing	Antibody reactive against mammalian transfected lysate.
Storage Buffer	In 1x PBS, pH 7.4
Storage Instruction	Store at -20°C or lower. Aliquot to avoid repeated freezing and thawing.

Applications

- Western Blot (Transfected lysate)

Western Blot analysis of TAF11 expression in transfected 293T cell line ([H00006882-T02](#)) by TAF11 MaxPab polyclonal antibody.

Lane 1: TAF11 transfected lysate(23.30 KDa).

Lane 2: Non-transfected lysate.

[Protocol Download](#)

Gene Info — TAF11

Entrez GeneID [6882](#)

GeneBank Accession# [NM_005643.2](#)

Protein Accession# [NP_005634.1](#)

Gene Name TAF11

Gene Alias MGC:15243, PRO2134, TAF2I, TAFI28

Gene Description TAF11 RNA polymerase II, TATA box binding protein (TBP)-associated factor, 28kDa

Omim ID [600772](#)

Gene Ontology [Hyperlink](#)

Gene Summary

Initiation of transcription by RNA polymerase II requires the activities of more than 70 polypeptide s. The protein that coordinates these activities is transcription factor IID (TFIID), which binds to the core promoter to position the polymerase properly, serves as the scaffold for assembly of the remainder of the transcription complex, and acts as a channel for regulatory signals. TFIID is composed of the TATA-binding protein (TBP) and a group of evolutionarily conserved proteins known as TBP-associated factors or TAFs. TAFs may participate in basal transcription, serve as coactivators, function in promoter recognition or modify general transcription factors (GTFs) to facilitate complex assembly and transcription initiation. This gene encodes a small subunit of TFIID that is present in all TFIID complexes and interacts with TBP. This subunit also interacts with another small subunit, TAF13, to form a heterodimer with a structure similar to the histone core structure. [provided by RefSeq]

Other Designations

OTTHUMP00000016241|TAF11 RNA polymerase II, TATA box binding protein (TBP)-associated factor, 28 kD|TATA box binding protein (TBP)-associated factor, RNA polymerase II, I, 28kD|TBP-associated factor 11|TFIID subunit p30-beta|transcription initiation facto

Pathway

- [Basal transcription factors](#)

Disease

- [Kidney Failure](#)