

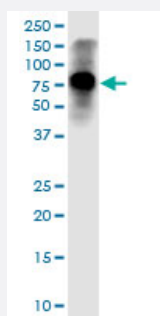
CX Grade

# STIM1 monoclonal antibody (M01J), clone 5A2

Catalog # H00006786-M01J

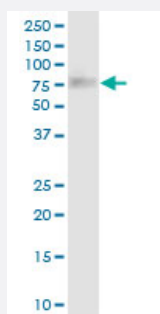
Size 100 ug

## Applications



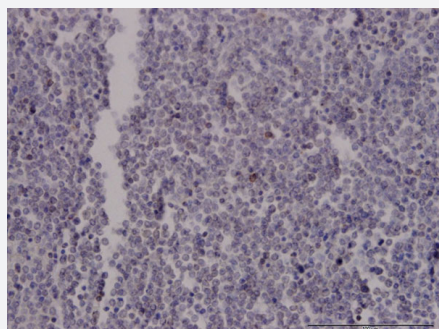
### Western Blot (Tissue lysate)

STIM1 monoclonal antibody (M01J), clone 5A2. Western Blot analysis of STIM1 expression in human liver.



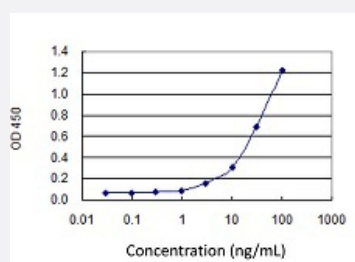
### Western Blot (Tissue lysate)

STIM1 monoclonal antibody (M01J), clone 5A2. Western Blot analysis of STIM1 expression in rat testis.



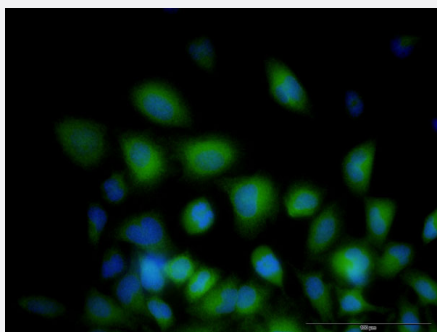
### Immunohistochemistry (Formalin/PFA-fixed paraffin-embedded sections)

Immunoperoxidase of monoclonal antibody to STIM1 on formalin-fixed paraffin-embedded human malignant lymphoma, diffuse large B. [antibody concentration 3 ug/ml]



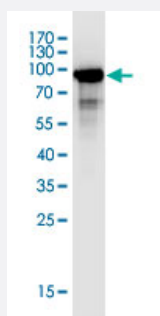
### Sandwich ELISA (Recombinant protein)

Detection limit for recombinant GST tagged STIM1 is 1 ng/ml as a capture antibody.



## Immunofluorescence

Immunofluorescence of monoclonal antibody to STIM1 on HeLa cell . [antibody concentration 10 ug/ml]



Western Blot detection against Immunogen (98.56 KDa) .

## Specification

### Product Description

Mouse monoclonal antibody raised against a full-length recombinant STIM1. This product is belong to Cell Culture Grade Antibody (CX Grade).

### Immunogen

STIM1 (AAH21300, 24 a.a. ~ 685 a.a) full-length recombinant protein with GST tag. MW of the GST tag alone is 26 KDa.

### Sequence

SHSHSEKATGTSSGANSEESTAAEFCDKPLCHSEDEKLSFEAVRNHKLMDDDANGDVDVEE  
SDEFLREDLNYHPTVKHSTFHGEDKLISVEDLWKAWKSSEVYNWTVDEVVQWLITYVELPQYE  
ETFRKLQLSGHAMPRLAVTNTTMTGAVLKMTDRSHRQKLQKALDVLFGPPLLTRHNHLKDFML  
VVSIVIGVGGCWFAYIQNRYSKEHMKMMKDLEGLHRAEQSLHDLQERLHKAQEEHRTVEVEKV  
HLEKKLRDEINLAKQEAQRLKELREGTENERSRQKYAEELQVREALRKAKEKESHSSWYAP  
EALQKWQLTHEVEVQYNIKKQNAEKQLLVAKEGAEEKKKRNTLFGTFHVAHSSSLDDVDHKIL  
TAKQALSEVTAALRERLHRWQQIEILCGFQVNNPGIHSVAALNIDPSWMGSTRPNPAHFIMTDDV  
DDMDEEIVSPLSMQSPSLQSSVRQRLTEPQHGLGSQRDLTHSDSESSLHMSDRQRVAPKPPQM  
SRAADEALNAMTSNGSHRLIEGVHPGSLVEKLPDSPALAKKALLALNHGLDKAHSMLSPSAP  
PGGSPHLDDSSRSHSPSSPDPTSPVGDSRALQASRNTRIPHLAGKKAVAEEDNGSIGEETDSS  
PGRKKFPLKIFKKPLKK

### Host

Mouse

### Reactivity

Human, Rat

### Preparation Method

Cell Culture Production

### Isotype

IgG2a Kappa

**Quality Control Testing**

Antibody Reactive Against Recombinant Protein.  
Western Blot detection against Immunogen (98.56 KDa) .

**Storage Buffer**

In 1x PBS, pH 7.4

**Storage Instruction**

Store at -20°C or lower. Aliquot to avoid repeated freezing and thawing.

## Applications

- Western Blot (Tissue lysate)

STIM1 monoclonal antibody (M01J), clone 5A2. Western Blot analysis of STIM1 expression in human liver.

[Protocol Download](#)

- Western Blot (Tissue lysate)

STIM1 monoclonal antibody (M01J), clone 5A2. Western Blot analysis of STIM1 expression in rat testis.

[Protocol Download](#)

- Western Blot (Recombinant protein)

[Protocol Download](#)

- Immunohistochemistry (Formalin/PFA-fixed paraffin-embedded sections)

Immunoperoxidase of monoclonal antibody to STIM1 on formalin-fixed paraffin-embedded human malignant lymphoma, diffuse large B. [antibody concentration 3 ug/ml]

[Protocol Download](#)

- Sandwich ELISA (Recombinant protein)

Detection limit for recombinant GST tagged STIM1 is 1 ng/ml as a capture antibody.

[Protocol Download](#)

- ELISA

- Immunofluorescence

Immunofluorescence of monoclonal antibody to STIM1 on HeLa cell . [antibody concentration 10 ug/ml]

## Gene Info — STIM1

Entrez GeneID

[6786](#)

GeneBank Accession#	<a href="#">BC021300</a>
Protein Accession#	<a href="#">AAH21300</a>
Gene Name	STIM1
Gene Alias	D11S4896E, GOK
Gene Description	stromal interaction molecule 1
Omim ID	<a href="#">605921</a>
Gene Ontology	<a href="#">Hyperlink</a>
Gene Summary	<p>This gene encodes a type 1 transmembrane protein that mediates Ca<sup>2+</sup> influx after depletion of intracellular Ca<sup>2+</sup> stores by gating of store-operated Ca<sup>2+</sup> influx channels (SOCs). It is one of several genes located in the imprinted gene domain of 11p15.5, an important tumor-suppressor gene region. Alterations in this region have been associated with the Beckwith-Wiedemann syndrome, Wilms tumor, rhabdomyosarcoma, adrenocortical carcinoma, and lung, ovarian, and breast cancer. This gene may play a role in malignancies and disease that involve this region, as well as early hematopoiesis, by mediating attachment to stromal cells. This gene is oriented in a head-to-tail configuration with the ribonucleotide reductase 1 gene (RRM1), with the 3' end of this gene situated 1.6 kb from the 5' end of the RRM1 gene</p>
Other Designations	-