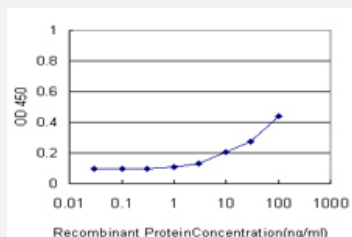


SSX4 monoclonal antibody (M02), clone 3E10

Catalog # H00006759-M02

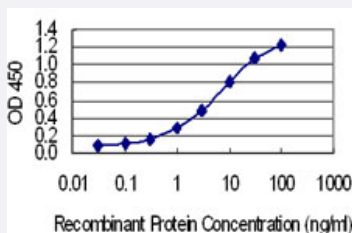
Size 100 ug

Applications



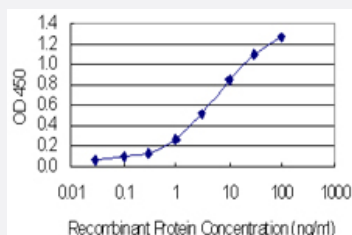
Sandwich ELISA (Recombinant protein)

Detection limit for recombinant GST tagged SSX4 is approximately 3ng/ml as a capture antibody.



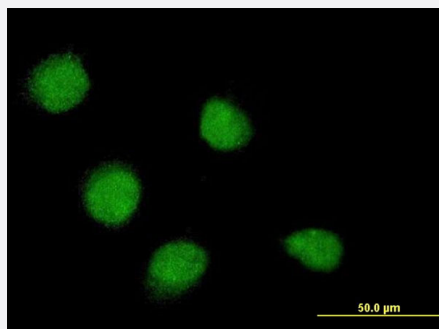
Sandwich ELISA (Recombinant protein)

Detection limit for recombinant GST tagged SSX4 is 0.1 ng/ml as a capture antibody.



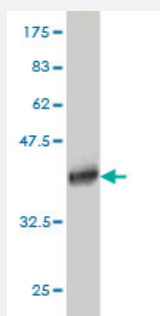
Sandwich ELISA (Recombinant protein)

Detection limit for recombinant GST tagged SSX4 is 0.03 ng/ml as a capture antibody.



Immunofluorescence

Immunofluorescence of monoclonal antibody to SSX4 on HeLa cell . [antibody concentration 10 ug/ml]



Western Blot detection against Immunogen (36.52 KDa) .

Specification

Product Description	Mouse monoclonal antibody raised against a partial recombinant SSX4.
Immunogen	SSX4 (NP_005627, 91 a.a. ~ 188 a.a) partial recombinant protein with GST tag. MW of the GST tag alone is 26 KDa.
Sequence	RNQVERPQMTFGSLQRIFPKIMPKKPAEEENGLKEVPEASGPQNDGKQLCPPGNPSTLEKINKTS GPKRGKHAWTHRLRERKQLVYEEISDPEEDDE
Host	Mouse
Reactivity	Human
Interspecies Antigen Sequence	Mouse (55)
Isotype	IgG2a Kappa
Quality Control Testing	Antibody Reactive Against Recombinant Protein. Western Blot detection against Immunogen (36.52 KDa) .
Storage Buffer	In 1x PBS, pH 7.4
Storage Instruction	Store at -20°C or lower. Aliquot to avoid repeated freezing and thawing.

Applications

- Western Blot (Recombinant protein)

[Protocol Download](#)

- Sandwich ELISA (Recombinant protein)

Detection limit for recombinant GST tagged SSX4 is approximately 3ng/ml as a capture antibody.

[Protocol Download](#)

- Sandwich ELISA (Recombinant protein)

Detection limit for recombinant GST tagged SSX4 is 0.1 ng/ml as a capture antibody.

[Protocol Download](#)

- Sandwich ELISA (Recombinant protein)

Detection limit for recombinant GST tagged SSX4 is 0.03 ng/ml as a capture antibody.

[Protocol Download](#)

- ELISA

- Immunofluorescence

Immunofluorescence of monoclonal antibody to SSX4 on HeLa cell . [antibody concentration 10 ug/ml]

Gene Info — SSX4

Entrez GeneID	6759
---------------	----------------------

GeneBank Accession#	NM_005636
---------------------	---------------------------

Protein Accession#	NP_005627
--------------------	---------------------------

Gene Name	SSX4
-----------	------

Gene Alias	MGC119056, MGC12411
------------	---------------------

Gene Description	synovial sarcoma, X breakpoint 4
------------------	----------------------------------

Omim ID	300326
---------	------------------------

Gene Ontology	Hyperlink
---------------	---------------------------

Gene Summary

The product of this gene belongs to the family of highly homologous synovial sarcoma X (SSX) breakpoint proteins. These proteins may function as transcriptional repressors. They are also capable of eliciting spontaneously humoral and cellular immune responses in cancer patients, and are potentially useful targets in cancer vaccine-based immunotherapy. SSX1, SSX2 and SSX4 genes have been involved in the t(X;18) translocation characteristically found in all synovial sarcomas. This translocation results in the fusion of the synovial sarcoma translocation gene on chromosome 18 to one of the SSX genes on chromosome X. Chromosome Xp11 contains a segmental duplication resulting in two identical copies of synovial sarcoma, X breakpoint 4, SSX4 and SSX4B, in tail-to-tail orientation. This gene, SSX4, represents the more telomeric copy. Two transcript variants encoding distinct isoforms have been identified for this gene. [provided by RefSeq]

Other Designations

OTTHUMP00000024292