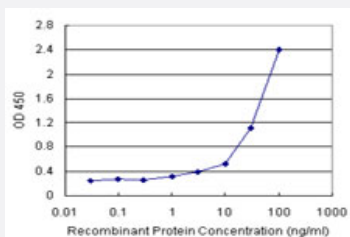


TRIM21 (Human) Matched Antibody Pair

Catalog # H00006737-AP11

Size 1 Set

Applications



Sandwich ELISA detection sensitivity ranging from 1 ng/ml to 100 ng/ml.

Specification

Product Description	This antibody pair set comes with a matched antibody pair to detect and quantify the protein level of human TRIM21.
Reactivity	Human
Quality Control Testing	Standard curve using recombinant protein (H00006737-P01) as an analyte. Sandwich ELISA detection sensitivity ranging from 1 ng/ml to 100 ng/ml.
Supplied Product	Antibody pair set content: 1. Capture antibody: rabbit MaxPab® affinity purified polyclonal anti-TRIM21 (100 ug) 2. Detection antibody: mouse monoclonal anti-TRIM21, IgG2a Kappa (20 ug) *Reagents are sufficient for at least 1-2 x 96 well plates using recommended protocols.
Storage Instruction	Store reagents of the antibody pair set at -20°C or lower. Please aliquot to avoid repeated freeze thaw cycle. Reagents should be returned to -20°C storage immediately after use.

Applications

- ELISA Pair (Recombinant protein)

[Protocol Download](#)

Gene Info — TRIM21

Entrez GeneID [6737](#)

Gene Name TRIM21

Gene Alias RNF81, RO52, SSA, SSA1

Gene Description tripartite motif-containing 21

Omim ID [109092](#)

Gene Ontology [Hyperlink](#)

Gene Summary This gene encodes a member of the tripartite motif (TRIM) family. The TRIM motif includes three zinc-binding domains, a RING, a B-box type 1 and a B-box type 2, and a coiled-coil region. The encoded protein is part of the RoSSA ribonucleoprotein, which includes a single polypeptide and one of four small RNA molecules. The RoSSA particle localizes to both the cytoplasm and the nucleus. RoSSA interacts with autoantigens in patients with Sjogren syndrome and systemic lupus erythematosus. Alternatively spliced transcript variants for this gene have been described but the full-length nature of only one has been determined. [provided by RefSeq]

Other Designations Sicca syndrome antigen A|Sjogren syndrome antigen A1 (52kDa, ribonucleoprotein autoantigen SS-A/Ro)|tripartite motif protein 21

Pathway

- [Systemic lupus erythematosus](#)

Disease

- [Anemia](#)
- [Genetic Predisposition to Disease](#)
- [Lupus Erythematosus](#)
- [Ovarian Neoplasms](#)