

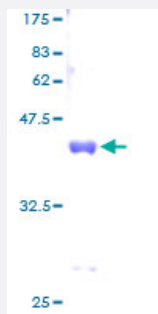
Full-Length

SUMO2 (Human) Recombinant Protein (P01)

Catalog # H00006613-P01

Size 25 ug, 10 ug

Applications



Specification

Product Description	Human SUMO2 full-length ORF (AAH08450, 1 a.a. - 95 a.a.) recombinant protein with GST-tag at N-terminal.
Sequence	MADEKPKEGVKTENNNHNLKVAGQDGSVVQFKIKRHTPLSKLMKAYCERQGLSMRQIRFRFDG QPINETDTPAQLEMEDEDIDVFQQQTGGVY
Host	Wheat Germ (in vitro)
Theoretical MW (kDa)	36.19
Preparation Method	in vitro wheat germ expression system
Purification	Glutathione Sepharose 4 Fast Flow
Quality Control Testing	12.5% SDS-PAGE Stained with Coomassie Blue.
Storage Buffer	50 mM Tris-HCl, 10 mM reduced Glutathione, pH=8.0 in the elution buffer.
Storage Instruction	Store at -80°C. Aliquot to avoid repeated freezing and thawing.
Note	Best use within three months from the date of receipt of this protein.

Applications

- Enzyme-linked Immunoabsorbent Assay
- Western Blot (Recombinant protein)
- Antibody Production
- Protein Array

Gene Info — SUMO2

Entrez GeneID [6613](#)

GeneBank Accession# [BC008450](#)

Protein Accession# [AAH08450](#)

Gene Name SUMO2

Gene Alias HSMT3, MGC117191, SMT3B, SMT3H2

Gene Description SMT3 suppressor of mif two 3 homolog 2 (S. cerevisiae)

Omim ID [603042](#)

Gene Ontology [Hyperlink](#)

Gene Summary This gene encodes a protein that is a member of the SUMO (small ubiquitin-like modifier) protein family. It functions in a manner similar to ubiquitin in that it is bound to target proteins as part of a post-translational modification system. However, unlike ubiquitin which targets proteins for degradation, this protein is involved in a variety of cellular processes, such as nuclear transport, transcriptional regulation, apoptosis, and protein stability. It is not active until the last two amino acids of the carboxy-terminus have been cleaved off. Numerous pseudogenes have been reported for this gene. Alternate transcriptional splice variants, encoding different isoforms, have been characterized. [provided by RefSeq]

Other Designations SMT3 suppressor of mif two 3 homolog 2|sentrin 2|small ubiquitin-like modifier 2, isoform a