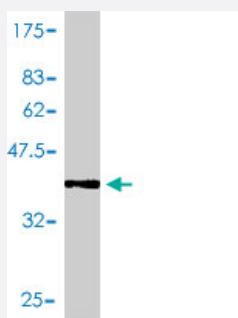


SUMO2 polyclonal antibody (A01)

Catalog # H00006613-A01

Size 50 uL

Applications



Western Blot detection against Immunogen (36.56 KDa) .

Specification

Product Description	Mouse polyclonal antibody raised against a full-length recombinant SUMO2.
Immunogen	SUMO2 (AAH08450, 1 a.a. ~ 95 a.a) full-length recombinant protein with GST tag.
Sequence	MADEKPKEGVKTENNNHINLKVAGQDGSVVQFKIKRHTPLSKLMKAYCERQGLSMRQIRFRFDG QPINETDTPAQLEMEDEDTIDVFQQQTGGVY
Host	Mouse
Reactivity	Human
Quality Control Testing	Antibody Reactive Against Recombinant Protein. Western Blot detection against Immunogen (36.56 KDa) .
Storage Buffer	50 % glycerol
Storage Instruction	Store at -20°C or lower. Aliquot to avoid repeated freezing and thawing.

Applications

- Western Blot (Recombinant protein)

[Protocol Download](#)

- ELISA

Gene Info — SUMO2

Entrez GeneID [6613](#)

GeneBank Accession# [BC008450](#)

Protein Accession# [AAH08450](#)

Gene Name SUMO2

Gene Alias HSMT3, MGC117191, SMT3B, SMT3H2

Gene Description SMT3 suppressor of mif two 3 homolog 2 (S. cerevisiae)

Omim ID [603042](#)

Gene Ontology [Hyperlink](#)

Gene Summary This gene encodes a protein that is a member of the SUMO (small ubiquitin-like modifier) protein family. It functions in a manner similar to ubiquitin in that it is bound to target proteins as part of a post-translational modification system. However, unlike ubiquitin which targets proteins for degradation, this protein is involved in a variety of cellular processes, such as nuclear transport, transcriptional regulation, apoptosis, and protein stability. It is not active until the last two amino acids of the carboxy-terminus have been cleaved off. Numerous pseudogenes have been reported for this gene. Alternate transcriptional splice variants, encoding different isoforms, have been characterized. [provided by RefSeq]

Other Designations SMT3 suppressor of mif two 3 homolog 2|sentrin 2|small ubiquitin-like modifier 2, isoform a