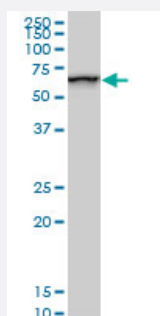


# SMARCD2 monoclonal antibody (M02), clone 2B2

Catalog # H00006603-M02

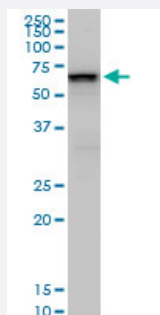
Size 100 ug

## Applications



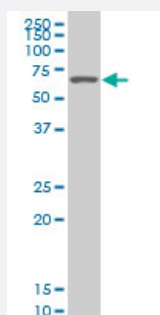
### Western Blot (Cell lysate)

SMARCD2 monoclonal antibody (M02), clone 2B2. Western Blot analysis of SMARCD2 expression in PC-12(Cat # L012V1 ).



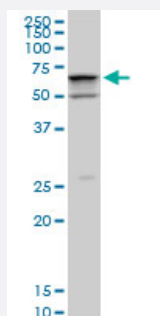
### Western Blot (Cell lysate)

SMARCD2 monoclonal antibody (M02), clone 2B2. Western Blot analysis of SMARCD2 expression in NIH/3T3(Cat # L018V1 ).



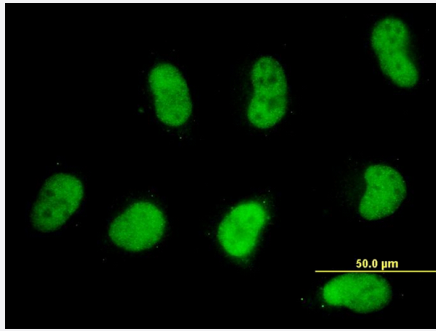
### Western Blot (Cell lysate)

SMARCD2 monoclonal antibody (M02), clone 2B2 Western Blot analysis of SMARCD2 expression in Hela S3 NE ( Cat # L013V3 ).



### Western Blot (Cell lysate)

SMARCD2 monoclonal antibody (M02), clone 2B2. Western Blot analysis of SMARCD2 expression in Raw 264.7(Cat # L024V1 ).



## Immunofluorescence

Immunofluorescence of monoclonal antibody to SMARCD2 on HeLa cell.  
[antibody concentration 10 ug/ml]

## Specification

<b>Product Description</b>	Mouse monoclonal antibody raised against a partial recombinant SMARCD2.
<b>Immunogen</b>	SMARCD2 (NP_003068, 398 a.a. ~ 474 a.a) partial recombinant protein with GST tag. MW of the GST tag alone is 26 KDa.
<b>Sequence</b>	RDFMLSFSTDPQDFIQEWLRSQRRDLKIITDVIGNPEEERRAAFYHQPWAEAVGRHIFAKVQQR RQELEQVLGIRL
<b>Host</b>	Mouse
<b>Reactivity</b>	Human, Mouse, Rat
<b>Interspecies Antigen Sequence</b>	Mouse (99); Rat (99)
<b>Isotype</b>	IgG2a Kappa
<b>Quality Control Testing</b>	Antibody Reactive Against Recombinant Protein.
<b>Storage Buffer</b>	In 1x PBS, pH 7.4
<b>Storage Instruction</b>	Store at -20°C or lower. Aliquot to avoid repeated freezing and thawing.

## Applications

- Western Blot (Cell lysate)

SMARCD2 monoclonal antibody (M02), clone 2B2. Western Blot analysis of SMARCD2 expression in PC-12(Cat # L012V1 ).

[Protocol Download](#)

- Western Blot (Cell lysate)

SMARCD2 monoclonal antibody (M02), clone 2B2. Western Blot analysis of SMARCD2 expression in NIH/3T3(Cat # L018V1 ).

[Protocol Download](#)

- Western Blot (Cell lysate)

SMARCD2 monoclonal antibody (M02), clone 2B2 Western Blot analysis of SMARCD2 expression in Hela S3 NE ( Cat # L013V3 ).

[Protocol Download](#)

- Western Blot (Cell lysate)

SMARCD2 monoclonal antibody (M02), clone 2B2. Western Blot analysis of SMARCD2 expression in Raw 264.7(Cat # L024V1 ).

[Protocol Download](#)

- ELISA

- Immunofluorescence

Immunofluorescence of monoclonal antibody to SMARCD2 on HeLa cell. [antibody concentration 10 ug/ml]

## Gene Info — SMARCD2

Entrez GeneID	<a href="#">6603</a>
GeneBank Accession#	<a href="#">NM_003077</a>
Protein Accession#	<a href="#">NP_003068</a>
Gene Name	SMARCD2
Gene Alias	BAF60B, CRACD2, PRO2451, Rsc6p
Gene Description	SWI/SNF related, matrix associated, actin dependent regulator of chromatin, subfamily d, member 2
Omim ID	<a href="#">601736</a>
Gene Ontology	<a href="#">Hyperlink</a>

**Gene Summary**

The protein encoded by this gene is a member of the SWI/SNF family of proteins, whose members display helicase and ATPase activities and which are thought to regulate transcription of certain genes by altering the chromatin structure around those genes. The encoded protein is part of the large ATP-dependent chromatin remodeling complex SNF/SWI and has sequence similarity to the yeast Swp73 protein. Alternatively spliced transcript variants encoding different isoforms have been found for this gene. [provided by RefSeq]

**Other Designations**

SWI/SNF complex 60 kDa subunit B|SWI/SNF-related matrix-associated actin-dependent regulator of chromatin d2|Swp73-like protein|chromatin remodeling complex BAF60B subunit|mammalian chromatin remodeling complex BRG1-associated factor 60B

**Publication Reference**

- [Baf60b-mediated ATM-p53 activation blocks cell identity conversion by sensing chromatin opening.](#)

Ji S, Zhu L, Gao Y, Zhang X, Yan Y, Cen J, Li R, Zeng R, Liao L, Hou C, Gao Y, Gao S, Wei G, Hui L.

Cell Research 2017 Mar; 27(5):642.

Application: IP-WB, Mouse, Mouse wild-type (WT) tail-tip fibroblasts (TTFs)