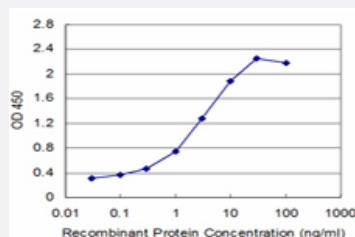


# SMARCA2 monoclonal antibody (M06), clone 2D12

Catalog # H00006595-M06

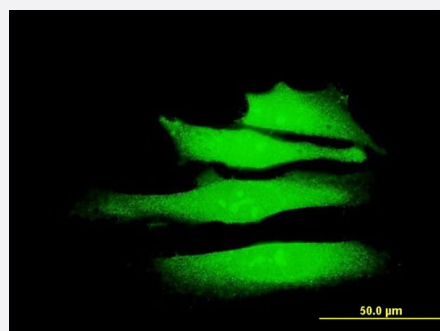
Size 100 ug

## Applications



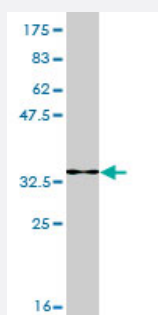
### Sandwich ELISA (Recombinant protein)

Detection limit for recombinant GST tagged SMARCA2 is approximately 0.1ng/ml as a capture antibody.



### Immunofluorescence

Immunofluorescence of monoclonal antibody to SMARCA2 on HeLa cell .  
[antibody concentration 10 ug/ml]



Western Blot detection against Immunogen (34.21 KDa) .

## Specification

### Product Description

Mouse monoclonal antibody raised against a partial recombinant SMARCA2.

<b>Immunogen</b>	SMARCA2 (NP_003061, 659 a.a. ~ 735 a.a) partial recombinant protein with GST tag. MW of the GST tag alone is 26 KDa.
<b>Sequence</b>	KILLDPNSEEVSEKDAKQIIETAKQDQDDEYSMQYSARGSQSYTVAHAISERVEKQSALLINGTLKHYQLQGLEWM
<b>Host</b>	Mouse
<b>Reactivity</b>	Human
<b>Interspecies Antigen Sequence</b>	Mouse (100); Rat (97)
<b>Isotype</b>	IgG2a Kappa
<b>Quality Control Testing</b>	Antibody Reactive Against Recombinant Protein. Western Blot detection against Immunogen (34.21 KDa) .
<b>Storage Buffer</b>	In 1x PBS, pH 7.4
<b>Storage Instruction</b>	Store at -20°C or lower. Aliquot to avoid repeated freezing and thawing.

## Applications

- Western Blot (Recombinant protein)

[Protocol Download](#)

- Sandwich ELISA (Recombinant protein)

Detection limit for recombinant GST tagged SMARCA2 is approximately 0.1ng/ml as a capture antibody.

[Protocol Download](#)

- ELISA

- Immunofluorescence

Immunofluorescence of monoclonal antibody to SMARCA2 on HeLa cell . [antibody concentration 10 ug/ml]

## Gene Info — SMARCA2

**Entrez GeneID** [6595](#)

**GeneBank Accession#** [NM\\_003070](#)

Protein Accession#	<a href="#">NP_003061</a>
Gene Name	SMARCA2
Gene Alias	BAF190, BRM, FLJ36757, MGC74511, SNF2, SNF2L2, SNF2LA, SWI2, Sth1p, hBRM, hSNF2a
Gene Description	SWI/SNF related, matrix associated, actin dependent regulator of chromatin, subfamily a, member 2
Omim ID	<a href="#">600014</a>
Gene Ontology	<a href="#">Hyperlink</a>
Gene Summary	The protein encoded by this gene is a member of the SWI/SNF family of proteins and is highly similar to the brahma protein of Drosophila. Members of this family have helicase and ATPase activities and are thought to regulate transcription of certain genes by altering the chromatin structure around those genes. The encoded protein is part of the large ATP-dependent chromatin remodeling complex SNF/SWI, which is required for transcriptional activation of genes normally repressed by chromatin. Two transcript variants encoding different isoforms have been found for this gene, which contains a trinucleotide repeat (CAG) length polymorphism. [provided by RefSeq]
Other Designations	OTTHUMP00000020970 OTTHUMP00000020971 SNF2-alpha SNF2-like 2 SNF2/SWI2-like protein 2 SWI/SNF-related matrix-associated actin-dependent regulator of chromatin a2 global transcription activator homologous sequence sucrose nonfermenting 2-like protein 2

## Disease

- [Breast cancer](#)
- [Breast Neoplasms](#)
- [Schizophrenia](#)
- [Tobacco Use Disorder](#)