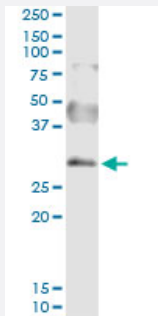


SNAI2 (Human) IP-WB Antibody Pair

Catalog # H00006591-PW2

Size 1 Set

Applications



Immunoprecipitation of SNAI2 transfected lysate using rabbit polyclonal anti-SNAI2 and Protein A Magnetic Bead ([U0007](#)), and immunoblotted with mouse purified polyclonal anti-SNAI2.

Specification

Product Description	This IP-WB antibody pair set comes with one antibody for immunoprecipitation and another to detect the precipitated protein in western blot.
Reactivity	Human
Quality Control Testing	Immunoprecipitation-Western Blot (IP-WB) Immunoprecipitation of SNAI2 transfected lysate using rabbit polyclonal anti-SNAI2 and Protein A Magnetic Bead (U0007), and immunoblotted with mouse purified polyclonal anti-SNAI2.
Supplied Product	Antibody pair set content: 1. Antibody pair for IP: rabbit polyclonal anti-SNAI2 (300 ul) 2. Antibody pair for WB: mouse purified polyclonal anti-SNAI2 (50 ug)
Storage Instruction	Store reagents of the antibody pair set at -20°C or lower. Please aliquot to avoid repeated freeze thaw cycle. Reagents should be returned to -20°C storage immediately after use.

Applications

- Immunoprecipitation-Western Blot

[Protocol Download](#)

Gene Info — SNAI2

Entrez GeneID	6591
Gene Name	SNAI2
Gene Alias	MGC10182, SLUG, SLUGH1, WS2D
Gene Description	snail homolog 2 (Drosophila)
Omim ID	172800 602150 608890
Gene Ontology	Hyperlink
Gene Summary	This gene encodes a member of the Snail family of C2H2-type zinc finger transcription factors. The encoded protein acts as a transcriptional repressor that binds to E-box motifs and is also likely to repress E-cadherin transcription in breast carcinoma. This protein is involved in epithelial-mesenchymal transitions and has antiapoptotic activity. Mutations in this gene may be associated with sporadic cases of neural tube defects. [provided by RefSeq]
Other Designations	OTTHUMP00000195093 neural crest transcription factor SLUG slug (chicken homolog), zinc finger protein slug homolog, zinc finger protein snail 2

Pathway

- [Adherens junction](#)

Disease

- [Cleft Lip](#)
- [Cleft Palate](#)