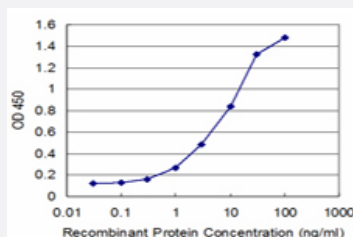


SNAI2 monoclonal antibody (M07), clone 2E10

Catalog # H00006591-M07

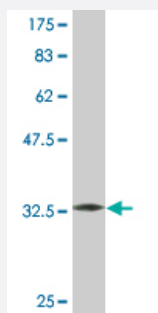
Size 100 ug

Applications



Sandwich ELISA (Recombinant protein)

Detection limit for recombinant GST tagged SNAI2 is approximately 0.3ng/ml as a capture antibody.



Western Blot detection against Immunogen (32.78 KDa) .

Specification

Product Description

Mouse monoclonal antibody raised against a full-length recombinant SNAI2.

Immunogen

SNAI2 (NP_003059, 69 a.a. ~ 132 a.a) full-length recombinant protein with GST tag. MW of the GST tag alone is 26 KDa.

Sequence

LPNGLSPLSGYSSSLGRVSPPPSDTSSKDHSGSESPISDEEERLQSKLSDPHAIEAEKFQCN

Host

Mouse

Reactivity

Human

Isotype

IgG2a Kappa

Quality Control Testing

Antibody Reactive Against Recombinant Protein.
Western Blot detection against Immunogen (32.78 KDa) .

Storage Buffer

In 1x PBS, pH 7.4

Storage Instruction

Store at -20°C or lower. Aliquot to avoid repeated freezing and thawing.

Applications

- Sandwich ELISA (Recombinant protein)

Detection limit for recombinant GST tagged SNAI2 is approximately 0.3ng/ml as a capture antibody.

[Protocol Download](#)

- ELISA

Gene Info — SNAI2

Entrez GeneID

[6591](#)

GeneBank Accession#

[NM_003068](#)

Protein Accession#

[NP_003059](#)

Gene Name

SNAI2

Gene Alias

MGC10182, SLUG, SLUGH1, WS2D

Gene Description

snail homolog 2 (Drosophila)

Omim ID

[172800 602150 608890](#)

Gene Ontology

[Hyperlink](#)

Gene Summary

This gene encodes a member of the Snail family of C2H2-type zinc finger transcription factors. The encoded protein acts as a transcriptional repressor that binds to E-box motifs and is also likely to repress E-cadherin transcription in breast carcinoma. This protein is involved in epithelial-mesenchymal transitions and has antiapoptotic activity. Mutations in this gene may be associated with sporadic cases of neural tube defects. [provided by RefSeq]

Other Designations

OTTHUMP00000195093|neural crest transcription factor SLUG|slug (chicken homolog), zinc finger protein|slug homolog, zinc finger protein|snail 2

Publication Reference

- [Endoplasmic reticulum protein 29 regulates epithelial cell integrity during the mesenchymal-epithelial transition in breast cancer cells.](#)

Bambang IF, Lee YK, Richardson DR, Zhang D.

Oncogene 2013 Mar; 32(10):1240.

Application: WB-Tr, Human, MDA-MB-231, BT549 cells

- [Endosomal sorting by Semaphorin 4A in retinal pigment epithelium supports photoreceptor survival.](#)

Toyofuku T, Nojima S, Ishikawa T, Takamatsu H, Tsujimura T, Uemura A, Matsuda J, Seki T, Kumanogoh A.

Genes & Development 2012 Apr; 26(8):816.

Pathway

- [Adherens junction](#)

Disease

- [Cleft Lip](#)
- [Cleft Palate](#)