

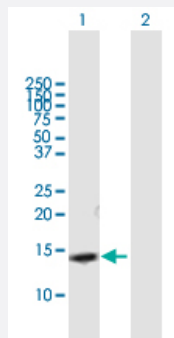
MaxPab®

SLPI purified MaxPab mouse polyclonal antibody (B01P)

Catalog # H00006590-B01P

Size 50 ug

Applications



Western Blot (Transfected lysate)

Western Blot analysis of SLPI expression in transfected 293T cell line ([H00006590-T03](#)) by SLPI MaxPab polyclonal antibody.

Lane 1: SLPI transfected lysate(14.52 KDa).

Lane 2: Non-transfected lysate.

Specification

Product Description	Mouse polyclonal antibody raised against a full-length human SLPI protein.
Immunogen	SLPI (ABM85471.1, 1 a.a. ~ 132 a.a) full-length human protein.
Sequence	MKSSGLFPFLVLLALGTLAPWAVEGSGKSFKAGVCPPKKSAQCLRYKKPECQSDWQCPCGKKR CCPDTCGIKCLDPVDTNPTRRKPGKCPVTYQGCLMLNPPNFCMDGGCKRDLKCCMGCMCGK SCVSPVKA
Host	Mouse
Reactivity	Human
Interspecies Antigen Sequence	Mouse (59)
Quality Control Testing	Antibody reactive against mammalian transfected lysate.
Storage Buffer	In 1x PBS, pH 7.4
Storage Instruction	Store at -20°C or lower. Aliquot to avoid repeated freezing and thawing.

Applications

- Western Blot (Transfected lysate)

Western Blot analysis of SLPI expression in transfected 293T cell line ([H00006590-T03](#)) by SLPI MaxPab polyclonal antibody.

Lane 1: SLPI transfected lysate(14.52 KDa).

Lane 2: Non-transfected lysate.

[Protocol Download](#)

Gene Info — SLPI

Entrez GeneID [6590](#)

GeneBank Accession# [DQ894545.2](#)

Protein Accession# [ABM85471.1](#)

Gene Name SLPI

Gene Alias ALK1, ALP, BLPI, HUSI, HUSH-I, MPI, WAP4, WFDC4

Gene Description secretory leukocyte peptidase inhibitor

Omim ID [107285](#)

Gene Ontology [Hyperlink](#)

Gene Summary This gene encodes a secreted inhibitor which protects epithelial tissues from serine proteases. It is found in various secretions including seminal plasma, cervical mucus, and bronchial secretions, and has affinity for trypsin, leukocyte elastase, and cathepsin G. Its inhibitory effect contributes to the immune response by protecting epithelial surfaces from attack by endogenous proteolytic enzymes; the protein is also thought to have broad-spectrum anti-biotic activity. [provided by RefSeq]

Other Designations OTTHUMP00000031775|WAP four-disulfide core domain 4|antileukoproteinase|mucus proteinase inhibitor|secretory leukocyte protease inhibitor (antileukoproteinase)|seminal proteinase inhibitor