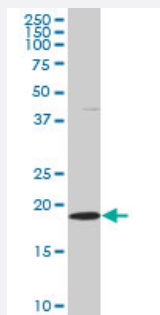


SKP1A monoclonal antibody (M03), clone 2E6

Catalog # H00006500-M03

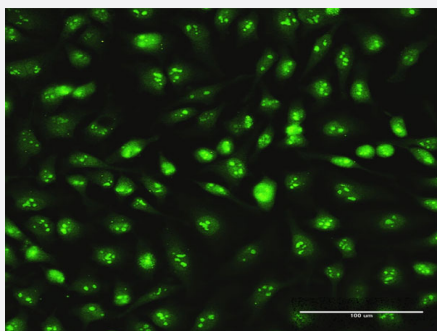
Size 100 ug

Applications



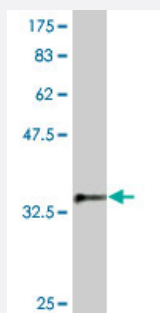
Western Blot (Cell lysate)

SKP1A monoclonal antibody (M03), clone 2E6. Western Blot analysis of SKP1A expression in HeLa (Cat # L013V1).



Immunofluorescence

Immunofluorescence of monoclonal antibody to SKP1 on HeLa cell . [antibody concentration 30 ug/ml]



Western Blot detection against Immunogen (37.62 KDa) .

Specification

Product Description

Mouse monoclonal antibody raised against a partial recombinant SKP1A.

Immunogen	SKP1A (NP_008861, 53 a.a. ~ 160 a.a) partial recombinant protein with GST tag. MW of the GST tag alone is 26 KDa.
Sequence	AILKKVIQWCTHHKDDPPPPEDDENKEKRTDDIPVWDQEFLKVDQGTLFELILAANYLDIKGLLDV TCKTVANMIKGKTPEEIRKTFNIKNDFTEEEEAQVGSTQFCL
Host	Mouse
Reactivity	Human
Isotype	IgG2a Kappa
Quality Control Testing	Antibody Reactive Against Recombinant Protein. Western Blot detection against Immunogen (37.62 KDa) .
Storage Buffer	In 1x PBS, pH 7.4
Storage Instruction	Store at -20°C or lower. Aliquot to avoid repeated freezing and thawing.

Applications

- Western Blot (Cell lysate)

SKP1A monoclonal antibody (M03), clone 2E6. Western Blot analysis of SKP1A expression in HeLa (Cat # L013V1).

[Protocol Download](#)

- Western Blot (Recombinant protein)

[Protocol Download](#)

- ELISA

- Immunofluorescence

Immunofluorescence of monoclonal antibody to SKP1 on HeLa cell . [antibody concentration 30 ug/ml]

Gene Info — SKP1

Entrez GeneID	6500
GeneBank Accession#	NM_006930
Protein Accession#	NP_008861
Gene Name	SKP1

Gene Alias	EMC19, MGC34403, OCP-II, OCP2, SKP1A, TCEB1L, p19A
Gene Description	S-phase kinase-associated protein 1
Omim ID	601434
Gene Ontology	Hyperlink
Gene Summary	<p>This gene encodes a component of SCF complexes, which are composed of this protein, cullin 1, a ring-box protein, and one member of the F-box family of proteins. This protein binds directly to the F-box motif found in F-box proteins. SCF complexes are involved in the regulated ubiquitination of specific protein substrates, which targets them for degradation by the proteasome. Specific F-box proteins recognize different target protein(s), and many specific SCF substrates have been identified including regulators of cell cycle progression and development. Studies have also characterized the protein as an RNA polymerase II elongation factor. Alternative splicing of this gene results in two transcript variants. A related pseudogene has been identified on chromosome 7. [provided by RefSeq]</p>
Other Designations	RNA polymerase II elongation factor-like protein OCP2 cyclin A/CDK2-associated p19 organ of Corti protein 2 transcription elongation factor B (SIII), polypeptide 1-like

Pathway

- [Cell cycle](#)
- [TGF-beta signaling pathway](#)
- [Ubiquitin mediated proteolysis](#)
- [Wnt signaling pathway](#)

Disease

- [Tobacco Use Disorder](#)