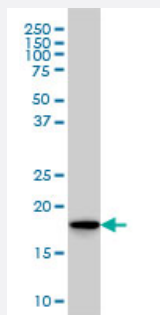


SKP1A monoclonal antibody (M01), clone 1H8

Catalog # H00006500-M01

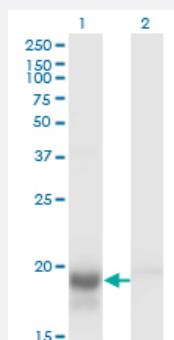
Size 100 ug

Applications



Western Blot (Cell lysate)

SKP1A monoclonal antibody (M01), clone 1H8 Western Blot analysis of SKP1A expression in HeLa (Cat # L013V1).

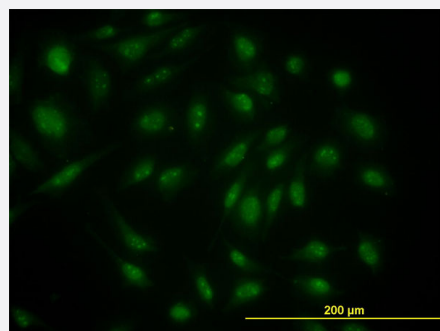


Western Blot (Transfected lysate)

Western Blot analysis of SKP1 expression in transfected 293T cell line by SKP1A monoclonal antibody (M01), clone 1H8.

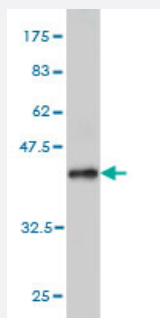
Lane 1: SKP1 transfected lysate(18.1 KDa).

Lane 2: Non-transfected lysate.



Immunofluorescence

Immunofluorescence of monoclonal antibody to SKP1A on HeLa cell. [antibody concentration 10 ug/ml]



Western Blot detection against Immunogen (37.62 KDa) .

Specification

Product Description	Mouse monoclonal antibody raised against a partial recombinant SKP1A.
Immunogen	SKP1A (NP_008861, 53 a.a. ~ 160 a.a) partial recombinant protein with GST tag. MW of the GST tag alone is 26 KDa.
Sequence	AILKKVIQWCTHHKDDPPPPEDDENKEKRTDDIPVWDQEFLKVDQGTLFELILAANYLDIKGLLDV TCKTVANMIKGKTPEEIRKTFNIKNDFTEEEEAQVGSTQFCL
Host	Mouse
Reactivity	Human
Isotype	IgG2a Kappa
Quality Control Testing	Antibody Reactive Against Recombinant Protein. Western Blot detection against Immunogen (37.62 KDa) .
Storage Buffer	In 1x PBS, pH 7.4
Storage Instruction	Store at -20°C or lower. Aliquot to avoid repeated freezing and thawing.

Applications

- Western Blot (Cell lysate)

SKP1A monoclonal antibody (M01), clone 1H8 Western Blot analysis of SKP1A expression in HeLa (Cat # L013V1).

[Protocol Download](#)

- Western Blot (Transfected lysate)

Western Blot analysis of SKP1 expression in transfected 293T cell line by SKP1A monoclonal antibody (M01), clone 1H8.

Lane 1: SKP1 transfected lysate(18.1 KDa).

Lane 2: Non-transfected lysate.

[Protocol Download](#)

- Western Blot (Recombinant protein)

[Protocol Download](#)

- ELISA

- Immunofluorescence

Immunofluorescence of monoclonal antibody to SKP1A on HeLa cell. [antibody concentration 10 ug/ml]

Gene Info — SKP1

Entrez GeneID [6500](#)

GeneBank Accession# [NM_006930](#)

Protein Accession# [NP_008861](#)

Gene Name SKP1

Gene Alias EMC19, MGC34403, OCP-II, OCP2, SKP1A, TCEB1L, p19A

Gene Description S-phase kinase-associated protein 1

Omim ID [601434](#)

Gene Ontology [Hyperlink](#)

Gene Summary

This gene encodes a component of SCF complexes, which are composed of this protein, cullin 1, a ring-box protein, and one member of the F-box family of proteins. This protein binds directly to the F-box motif found in F-box proteins. SCF complexes are involved in the regulated ubiquitination of specific protein substrates, which targets them for degradation by the proteasome. Specific F-box proteins recognize different target protein(s), and many specific SCF substrates have been identified including regulators of cell cycle progression and development. Studies have also characterized the protein as an RNA polymerase II elongation factor. Alternative splicing of this gene results in two transcript variants. A related pseudogene has been identified on chromosome 7. [provided by RefSeq]

Other Designations

RNA polymerase II elongation factor-like protein OCP2|cyclin A/CDK2-associated p19|organ of Corti protein 2|transcription elongation factor B (SIII), polypeptide 1-like

Publication Reference

- [Finding of bands of higher molecular weight than expected in three proteins in bovine preimplantation embryos.](#)

Kinterova V, Petruskova V, Kanka J, Toralova T.

Zygote (Cambridge, England) 2019 Jun; 27(3):187.

Application: WB, Bovine, Fibroblasts, Preimplantation embryos

Pathway

- [Cell cycle](#)
- [TGF-beta signaling pathway](#)
- [Ubiquitin mediated proteolysis](#)
- [Wnt signaling pathway](#)

Disease

- [Tobacco Use Disorder](#)