

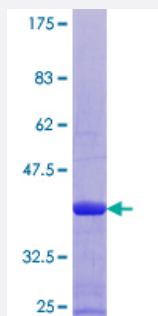
Full-Length

S100B (Human) Recombinant Protein (P01)

Catalog # H00006285-P01

Size 10 ug, 25 ug

Applications



Specification

Product Description	Human S100B full-length ORF (NP_006263.1, 1 a.a. - 92 a.a.) recombinant protein with GST-tag at N-terminal.
Sequence	MSELEKAMVALIDVFHQYSGREGDKHKLKKSELKELINNELSHFLEEIKEQEVVDKVMETLDNDGDGECDFQEFMAFVAMVTTACHEFFEHE
Host	Wheat Germ (in vitro)
Theoretical MW (kDa)	37.1
Interspecies Antigen Sequence	Mouse (99); Rat (98)
Preparation Method	in vitro wheat germ expression system
Purification	Glutathione Sepharose 4 Fast Flow
Quality Control Testing	12.5% SDS-PAGE Stained with Coomassie Blue.
Storage Buffer	50 mM Tris-HCl, 10 mM reduced Glutathione, pH=8.0 in the elution buffer.
Storage Instruction	Store at -80°C. Aliquot to avoid repeated freezing and thawing.
Note	Best use within three months from the date of receipt of this protein.

Applications

- Enzyme-linked Immunoabsorbent Assay
- Western Blot (Recombinant protein)
- Antibody Production
- Protein Array

Gene Info — S100B

Entrez GeneID [6285](#)

GeneBank Accession# [NM_006272.1](#)

Protein Accession# [NP_006263.1](#)

Gene Name S100B

Gene Alias NEF, S100, S100beta

Gene Description S100 calcium binding protein B

Omim ID [176990](#)

Gene Ontology [Hyperlink](#)

Gene Summary

The protein encoded by this gene is a member of the S100 family of proteins containing 2 EF-hand calcium-binding motifs. S100 proteins are localized in the cytoplasm and/or nucleus of a wide range of cells, and involved in the regulation of a number of cellular processes such as cell cycle progression and differentiation. S100 genes include at least 13 members which are located as a cluster on chromosome 1q21; however, this gene is located at 21q22.3. This protein may function in Neurite extension, proliferation of melanoma cells, stimulation of Ca²⁺ fluxes, inhibition of PKC-mediated phosphorylation, astrocytosis and axonal proliferation, and inhibition of microtubule assembly. Chromosomal rearrangements and altered expression of this gene have been implicated in several neurological, neoplastic, and other types of diseases, including Alzheimer's disease, Down's syndrome, epilepsy, amyotrophic lateral sclerosis, melanoma, and type I diabetes. [provided by RefSeq]

Other Designations

OTTHUMP00000174958|S-100 calcium-binding protein, beta chain|S100 beta|S100 calcium binding protein, beta (neural)|S100 calcium-binding protein, beta|S100 calcium-binding protein, beta (neural)

Disease

- [Alzheimer disease](#)
- [Bipolar Disorder](#)
- [Cognition Disorders](#)
- [Dementia](#)
- [Depressive Disorder](#)
- [Diseases in Twins](#)
- [Genetic Predisposition to Disease](#)
- [Mental Disorders](#)
- [Neuropsychological Tests](#)
- [Psychotic Disorders](#)
- [Schizophrenia](#)