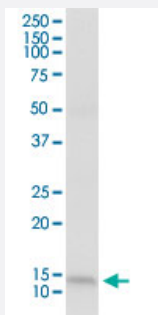


S100A7 (Human) IP-WB Antibody Pair

Catalog # H00006278-PW3

Size 1 Set

Applications



Immunoprecipitation of S100A7 transfected lysate using rabbit polyclonal anti-S100A7 and Protein A Magnetic Bead ([U0007](#)), and immunoblotted with mouse purified polyclonal anti-S100A7.

Specification

Product Description	This IP-WB antibody pair set comes with one antibody for immunoprecipitation and another to detect the precipitated protein in western blot.
Reactivity	Human
Quality Control Testing	Immunoprecipitation-Western Blot (IP-WB) Immunoprecipitation of S100A7 transfected lysate using rabbit polyclonal anti-S100A7 and Protein A Magnetic Bead (U0007), and immunoblotted with mouse purified polyclonal anti-S100A7.
Supplied Product	Antibody pair set content: 1. Antibody pair for IP: rabbit polyclonal anti-S100A7 (300 ul) 2. Antibody pair for WB: mouse purified polyclonal anti-S100A7 (50 ug)
Storage Instruction	Store reagents of the antibody pair set at -20°C or lower. Please aliquot to avoid repeated freeze thaw cycle. Reagents should be returned to -20°C storage immediately after use.

Applications

- Immunoprecipitation-Western Blot

[Protocol Download](#)

Gene Info — S100A7

Entrez GeneID [6278](#)

Gene Name S100A7

Gene Alias PSOR1, S100A7c

Gene Description S100 calcium binding protein A7

Omim ID [600353](#)

Gene Ontology [Hyperlink](#)

Gene Summary The protein encoded by this gene is a member of the S100 family of proteins containing 2 EF-hand calcium-binding motifs. S100 proteins are localized in the cytoplasm and/or nucleus of a wide range of cells, and involved in the regulation of a number of cellular processes such as cell cycle progression and differentiation. S100 genes include at least 13 members which are located as a cluster on chromosome 1q21. This protein differs from the other S100 proteins of known structure in its lack of calcium binding ability in one EF-hand at the N-terminus. This protein is markedly over-expressed in the skin lesions of psoriatic patients, but is excluded as a candidate gene for familial psoriasis susceptibility. The exact function of this protein is not known. [provided by RefSeq]

Other Designations OTTHUMP00000015327|OTTHUMP00000015328|S100 calcium-binding protein A7 (psoriasin 1)|psoriasin 1

Disease

- [Dermatitis](#)
- [Genetic Predisposition to Disease](#)
- [Ovarian Neoplasms](#)
- [Rhinitis](#)